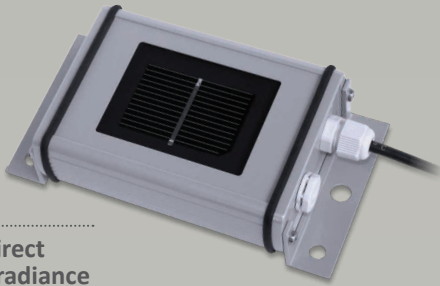


## Environmental Sensors

SE1000-SEN-IRR-S1 / SE1000-SEN-TAMB-S2  
SE1000-SEN-TMOD-S2 / SE1000-SEN-WIND-S1



▶ Direct Irradiance sensor



▶ Ambient Temperature sensor



▶ Module Temperature sensor



▶ Wind Velocity sensor

### Environmental Monitoring of your SolarEdge System

- Connect environmental sensors to the SolarEdge Control and Communication Gateway for monitoring of your site
- Used to calculate site performance ratio
- Irradiance, temperature and wind measurements



## Environmental Sensors

SE1000-SEN-IRR-S1 / SE1000-SEN-TAMB-S2 / SE1000-SEN-TMOD-S2 / SE1000-SEN-WIND-S1

|   | Direct Irradiance<br>SE1000-SEN-IRR-S1 | Ambient Temperature<br>SE1000-SEN-TAMB-S2 | Module Temperature<br>SE1000-SEN-TMOD-S2 | Wind Velocity<br>SE1000-SEN-WIND-S1  | Units   |
|---|--|---|--|--|---------|
| <b>OUTPUT</b>   |  |   |  |  |         |
| Electrical output range   | 0-1.4V                                 | 0-10V                                     | 4-20mA                                   | 4-20mA   |         |
| <b>MEASUREMENT</b>  |  |   |  |  |         |
| Range   | 0-1400 W/m <sup>2</sup>                | -40 to 90 °C /<br>-40 to 194 °F           | -40 to 90 °C /<br>-40 to 194 °F          | 0-50 m/s   |         |
| Accuracy  | ±5%                                    | 1% of full scale                          | 1% of full scale                         | ±0.5 m/s or ±3% of measuring value   |         |
| <b>INSTALLATION SPECIFICATIONS</b>                                |  |   |  |  |         |
| Control and Communication Gateway (sold separately; SE1000-CCG-G) | Needed                                 |   |  |  |         |
| Dimensions  | 154 x 86 x 40 /<br>6 x 3.5 x 1.5       | 64 x 58 x 34 /<br>2.5 x 2.3 x 1.3         | 64 x 58 x 34 /<br>2.5 x 2.3 x 1.3        | 165 x 105 x 105 /<br>6.5 x 4.2 x 4.2   | mm / in |
| Weight  | 340 / 0.75                             | 350 / 0.77                                | 350 / 0.77                               | 750 / 1.65   | gm / lb |
| Enclosure type  | Powder-coated aluminum                 | Pulver Coated Aluminium                   | Pulver Coated Aluminium                  | Housing - Aluminum (AlMgSi1)<br>Cup star - Synthetic, with fibre glass (PC-GF10)<br>Bottom - Synthetic (POM H2320) |         |
| Operating Temperature   | -20 to 70 / -4 to 155                  | -40 to 80 / -40 to 176                    | -40 to 80 / -40 to 176                   | 0 to 70 / 32 to 155  | °C / °F |
| Protection Rating   | IP65                                   | IP67                                      | IP67                                     | IP55   |         |

The warranty and service for the sensors is provided directly by Ingenieurbüro Mencke & Tegtmeyer GmbH; for more details, please see <http://www.imt-solar.com/products.html>

