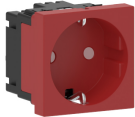


Date: 23.03.2023

Socket single 0° M45-1G-3001, 45x45mm with enhanced contact protection, red



Product description

Single flush-type socket outlet, 0° straight, cable connection via plug-in terminals, 2-pole, 16 A/250 V~, with connection terminals to VDE 0620, suitable for 1 right-angle or flat plug, with increased contact hazard protection to VDE 0620, for installation in wall trunking with 45 mm top section and all installation frames/device carriers for accommodating compact M45 built-in devices, for horizontal device installation. Note: The strain relief must be ordered separately.

Basic data

Item number	6957
Product group	40-Installation devices
Packing unit	1 piece
EAN code	4018475265219
Tariff number	85366990

Technical features

Model	SCHUKO
Number of units	1
Connection type	push-in clamp
With enhanced contact protection	yes
Label space/information surface	no
Colour	red
RAL-number (similar)	3003
Mounting method	wall trunking
Type of fastening	Snap mounting
Material	plastic
Surface finishing	matt
Nominal current	16 A
Nominal voltage	250 V
Width of device	45 mm
Height of device	45 mm
Depth of device	40 mm