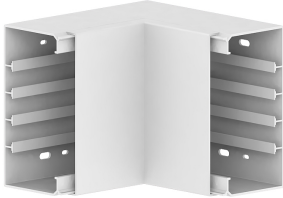


Date: 24.03.2023

## Inner corner FB 80x150-9010, PVC, mitre moulding, pure white

**Product description**

Internal corner 90°, from the basic profile of the installation trunking made of PVC, for corner bypass in rooms, side length: 180 mm.

**Basic data**

Item number	11894
Product group	10-Cable routing
Packing unit	1 piece
EAN code	4018475253919
Tariff number	39259020

**Technical features**

Height	80 mm
Width	150 mm
Model	base and cover
Angle	90 - 90 °
Material	plastic
Halogen free	yes
Type of fastening	base perforation
Colour	pure white
RAL-number	9010