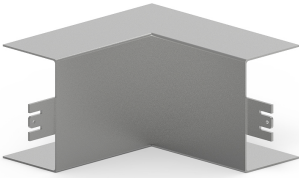


Date: 15.03.2023

Inner corner LFS 40x60, steel, zinc

Product description

Internal corner as moulded hood for installation trunking, for corner bypass in rooms.

**Basic data**

| | |
|---------------|------------------|
| Item number | 2310 |
| Product group | 10-Cable routing |
| Packing unit | 2 pieces |
| EAN code | 4018475023109 |
| Tariff number | 73089059 |

Technical features

| | |
|--------------------|----------------|
| Height | 40 mm |
| Width | 60 mm |
| Model | moulded hood |
| Angle | 90 - 90 ° |
| Material | steel |
| Halogen free | yes |
| Surface protection | pre-galvanised |
| Type of fastening | snap on |
| Colour | other |