

Basic

Thoroughly simple

The name says it all: a basic model. The Basic is a straightforward inwall loudspeaker made for those looking for robustness and quality at an acceptable price. This model has been given no bells & whistles or exotic gadgets. Its lines are restrained and it has a powerful speaker on board. Thanks to the two-way system, the Basic offers guaranteed sound quality. All models in this series can be painted or sprayed.



MD30

The MD30 is not much larger than an average spotlight, but incorporates an exceptionally warm sound generator.

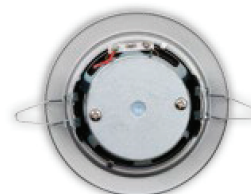
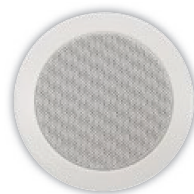
This makes it particularly suited for use in modern or renovated buildings where design and architecture are high on the agenda.



This MD30 doesn't need a lot of room to provide warm background sound.



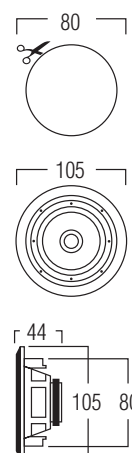
COLOURS white / grey



TECHNICAL SPECIFICATIONS

range	<30m ²
sound quality	background
system	voice coil
woofer	3" polypropylene
tweeter	-
amp power	10 - 50W (recommended)
sensitivity	91dB
impedance	8Ω
frequency range	50Hz - 15kHz
dimensions cut-out (Ø)	80mm
dimensions (Ø x d)	105 x 44mm
weight / piece	0.375kg
housing	metal
colour	white / grey
options	KIT RO105

DIMENSIONS





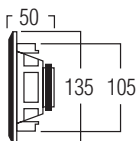
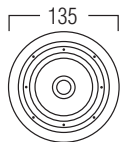
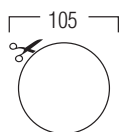
MD50

Though only slightly larger than a spotlight fitting, the MD50 generates incredibly warm sound. This makes it ideal for use in small rooms in new or renovated buildings where design and architecture play a starring role.

COLOURS white / grey



DIMENSIONS



TECHNICAL SPECIFICATIONS

range	<40m ²
sound quality	background
system	voice coil
woofer	4" polypropylene
tweeter	-
amp power	10 - 80W (recommended)
sensitivity	90dB
impedance	8Ω
frequency range	50Hz - 20kHz
dimensions cut-out (Ø)	105mm
dimensions (Ø x d)	135 x 50mm
weight / piece	0.46kg
housing	metal
colour	white / grey
options	KIT R0135

Slightly larger, the MD50 can carry sound farther than its little sister, the MD30.

MDC401

The MDC401 is part of the Basic series which stands out thanks to its excellent value-for-money. A no-bones-about-it inwall loud-speaker.



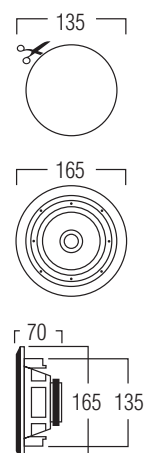
The MDC401 combines a very limited diameter with the tight reproduction of your favorite tune.



TECHNICAL SPECIFICATIONS

range	<40m ²
sound quality	background
system	2-way coaxial
woofer	4" polypropylene carbon
tweeter	0.5" polycarbonate
amp power	10 - 100W (recommended)
sensitivity	86dB
impedance	8Ω
frequency range	90Hz - 20kHz
dimensions cut-out (Ø)	135mm
dimensions (Ø x d)	165 x 70mm
weight / piece	1kg
housing	ABS
colour	white
extra	paintable
options	KITR01

DIMENSIONS





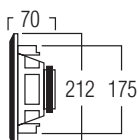
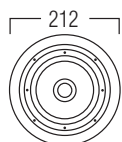
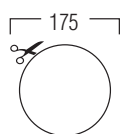
MDC501

The MDC501 is one of the most sought-after loudspeakers. Its secret? A warm, solid sound at a competitive price. Feel free to call this our allrounder.



The MDC501 is a common sight in shops, restaurants, retail chains, but also countless private homes.

DIMENSIONS



TECHNICAL SPECIFICATIONS

range	<40m ²
sound quality	warm
system	2-way coaxial
woofer	5.25" polypropylene carbon
tweeter	0.5" polycarbonate
amp power	10 - 100W (recommended)
sensitivity	88dB
impedance	8Ω
frequency range	85Hz - 20kHz
dimensions cut-out (Ø)	175mm
dimensions (Ø x d)	212 x 70mm
weight / piece	0.92kg
housing	ABS
colour	white
extra	paintable
options	KITR02 - MOKIT R0212



MDC620

The MDC620 has a 6.5" driver, making it a powerful player for medium-sized rooms. No frills and excellent value-for-money.



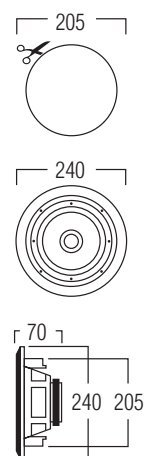
The MDC620 can really hold its own, even in large rooms or crowded, noisy places.



TECHNICAL SPECIFICATIONS

range	<50m ²
sound quality	warm
system	2-way coaxial
woofer	6.5" polypropylene carbon
tweeter	0.5" polycarbonate
amp power	20 - 120W (recommended)
sensitivity	92dB
impedance	8Ω
frequency range	70Hz - 20kHz
dimensions cut-out (Ø)	205mm
dimensions (Ø x d)	240 x 70mm
weight / piece	1.2kg
housing	ABS
colour	white
extra	paintable
options	KITR03 - MOKIT R0238

DIMENSIONS



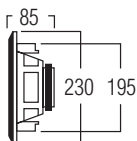
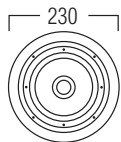
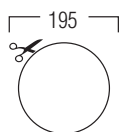


MDC650

This round inwall loudspeaker produces a full stereo sound all by itself. It was specially designed for more confined spaces (waiting room, toilet, small hall, ...). This world-class unit owes its special qualities to the built-in woofer, filter, 4 contacts and a double (!) tweeter.



DIMENSIONS



TECHNICAL SPECIFICATIONS

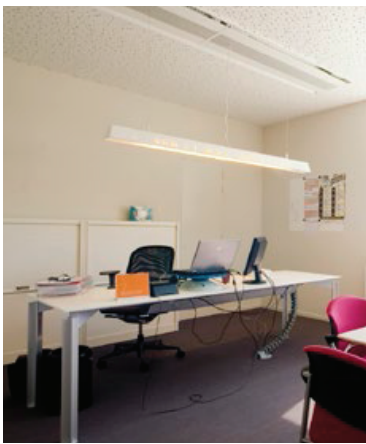
range	<50m ²
sound quality	allround
system	stereo speaker
woofer	6.5" injection cone rubber
tweeter	0.5 x 2" neodymium aluminium dome
amp power	20 - 120W (recommended)
sensitivity	87dB
impedance	8Ω
frequency range	70Hz - 20kHz
dimensions cut-out (Ø)	195mm
dimensions (Ø x d)	230 x 85mm
weight / piece	1.2kg
housing	ABS
colour	white
extra options	paintable KITRO3

No room for two loudspeakers? The MDC650 gives you the full stereo effect, all by its lonesome.



DC101

Prefer a sleeker look? If so, the DC101 is what you're looking for. No frills, just a trusty soldier that can handle both high-strung techno and soothing classical. You'll be keen on its price and performance.



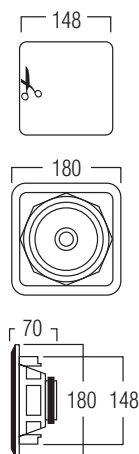
The DC101 is sleek yet flexible. Super user-friendly, you can set it up in a variety of rooms in the blink of an eye.

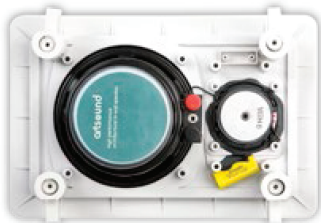


TECHNICAL SPECIFICATIONS

range	<50m ²
sound quality	allround
system	2-way coaxial
woofer	5.25" polypropylene carbon
tweeter	0.5" polycarbonate
amp power	10 - 100W (recommended)
sensitivity	88dB
impedance	8Ω
frequency range	85Hz - 20kHz
dim. cut-out (h x w)	148 x 148mm
dimensions (h x w x d)	180 x 180 x 70mm
weight / piece	0.950kg
housing	ABS
colour	white
extra	paintable
options	KITSQ1

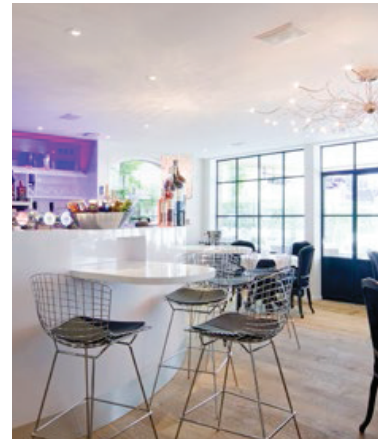
DIMENSIONS





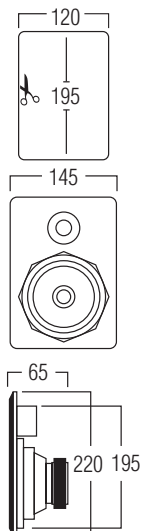
DC201

Although related to the MDC401, this DC201 is a touch sleeker. Super slim, it is ideal for installing in the space between the kitchen cupboard and the ceiling, for example.



The minimal width of the DC201 makes its versatility.

DIMENSIONS



TECHNICAL SPECIFICATIONS

range	<40m ²
sound quality	background
system	2-way
woofer	4" polypropylene carbon
tweeter	0.5" polycarbonate
amp power	10 - 100W (recommended)
sensitivity	84dB
impedance	8Ω
frequency range	80Hz - 20kHz
dim. cut-out (h x w)	195 x 120mm
dimensions (h x w x d)	220 x 145 x 65mm
weight / piece	0.8kg
housing	ABS
colour	white
extra	paintable
options	KITRE1



DC301

Exceptional warmth at a competitive price, all wrapped in a sleek, shape-hugging exterior. Meet the DC301. A sturdy woofer that can effortlessly fill any room in your house with sound.



The DC301 can pack a punch, yet still remain discreet, especially if you paint it to match your interior.



TECHNICAL SPECIFICATIONS

range	<50m ²
sound quality	warm
system	2-way
woofer	5.25" polypropylene carbon
tweeter	1" polycarbonate
amp power	20 - 120W (recommended)
sensitivity	87dB
impedance	8Ω
frequency range	75Hz - 20kHz
dim. cut-out (h x w)	245 x 155mm
dimensions (h x w x d)	220 x 145 x 65mm
weight / piece	1.3kg
housing	ABS
colour	white
extra	paintable
options	KITRE2

DIMENSIONS

