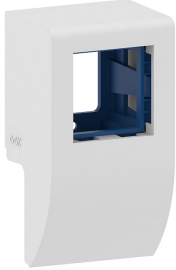


Date: 04.04.2023

## Appliance box single SL 20x50-9010, for one device 45x45 mm, pure white



### Product description

Appliance box for skirting trunking SL 20x50, for device installation of a compact M45 built-in device in the format 45x45 mm, device support base with four fastening points for screwing above the skirting trunking base. Note: The covers of the skirting trunking can be pushed sideways under the cover of the unit support, whereby the cover of the unit support performs a cut-covering function for the covers of the skirting trunking.

### Basic data

Item number	24188
Product group	70-Residential installation
Packing unit	1 piece
EAN code	4018475241978
Tariff number	85381000

### Technical features

Height baseboard duct	50 mm
Depth plinth skirting duct	20 mm
Number of device units	1
Equipped with	without
Mounting method installation unit	Standard
Material	plastic
Halogen free	no
Colour	pure white
RAL-number	9010
Decoration	without