

Date: 15.03.2023

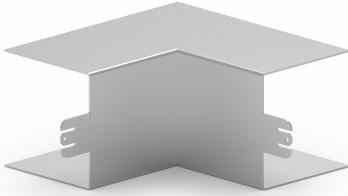
## Inner corner LFS 60x60, steel, zinc

**Product description**

Internal corner as moulded hood for installation trunking, for corner bypass in rooms.

**Basic data**

Item number	2312
Product group	10-Cable routing
Packing unit	2 pieces
EAN code	4018475023123
Tariff number	73089059

**Technical features**

Height	60 mm
Width	60 mm
Model	moulded hood
Angle	90 - 90 °
Material	steel
Halogen free	yes
Surface protection	pre-galvanised
Type of fastening	snap on
Colour	other