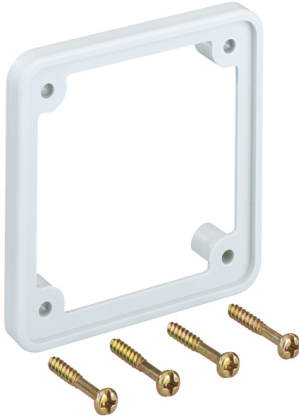


Date: 08.03.2023

Mounting kit CEE socket outlet, flange dimension 75x75mm, suitable for GED 50-1, GDY/P-1, white



Product description

Installation kit for CEE devices 16A (straight version) with flange dimensions 75 x 75 mm, spacing of fixing holes 60 mm, including 4 fixing screws, suitable for 1-fold device installation boxes (item no. 1261 for floor mounting, item no. 3677 for front mounting). Note: Due to the large number of devices available on the market, the dimensions should be checked beforehand.

Basic data

Item number	1263
Product group	20-Wall installation
Packing unit	10 pieces
EAN code	4018475012639
Tariff number	39269097

Technical features

Model	open
Number of units	1
Type of device	CEE
Material	plastic
Mounting method installation unit	screw