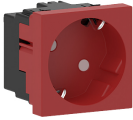


Date: 23.03.2023

## Socket single 45° M45-1W-3001, 45x45mm with enhanced contact protection, red



### Product description

Single flush-mounted socket outlet, 45° angled, cable connection via plug-in terminals, 2-pole, 16 A/250 V~, with connection terminals to VDE 0620, suitable for 1 angled or flat plug, with increased protection against accidental contact to VDE 0620, for installation in wall trunking and service poles with 45 mm top section and all mounting frames/device supports for accommodating compact M45 built-in devices, for vertical device installation.

### Basic data

Item number	6961
Product group	40-Installation devices
Packing unit	1 piece
EAN code	4018475265257
Tariff number	85366990

### Technical features

Model	SCHUKO
Number of units	1
Connection type	push-in clamp
With enhanced contact protection	yes
Label space/information surface	no
Colour	red
RAL-number (similar)	3003
Mounting method	wall trunking
Type of fastening	Snap mounting
Material	plastic
Surface finishing	matt
Nominal current	16 A
Nominal voltage	250 V
Width of device	45 mm
Height of device	45 mm
Depth of device	40 mm