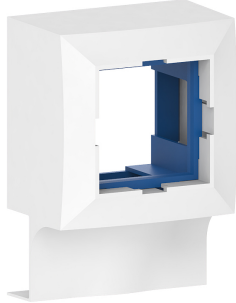


Date: 24.03.2023

## Appliance box LFG 15x30-9010, for one device 45x45 mm, pure white



### Product description

Surface-mounted box for freely positionable mounting on the installation trunking, for device installation of a compact M45 flush-mounted device in the format 45x45 mm, with overarching cover for the installation trunking.

### Basic data

Item number	16659
Product group	10-Cable routing
Packing unit	20 pieces
EAN code	4018475264151
Tariff number	85381000

### Technical features

Assembly arrangement	Surface mounted box
Number of units	1
Mounting direction	horizontal and vertical
Material	plastic
Halogen free	yes
Colour	white
RAL-number (similar)	9010
With cover frame	yes
With duct entry	yes
Width of device	45 mm
Height of device	45 mm