

## PRODUCT DATA SHEET

---

Part number	410406SW
EAN	4015609426294
Manufacturer	WALTHER-WERKE
WEEE-Reg.-Number:	DE 22131895

### Product description

---

Panel socket straight 16A 4P 6h with flange  
75x75mm for lighting and stage technology



Similar image

### Detailed product description

---

WALTHER Panel socket 16A 4P 400V 6h IP44  
 straight  
 made from PA6 material  
 in black for lighting and stage technology  
 finger-safe in accordance with BGV A3  
 soft transition  
 radius from flange to collar  
 flange 75x75  
 fixing center 60x60

### Ordering Information

---

Order unit	Piece
Customs number	85366990
Net weight	0,16 kg
Packing quantity (VPE)	10
Length of the packaging	0,31 m
Width of the packaging	0,163 m
Depth of the packaging	0,113 m
Gross weight(VPE)	1,712 kg

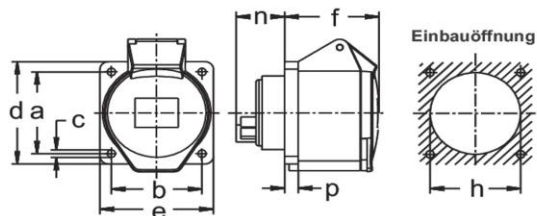
## Classification system

Classification system	ETIM_6.0
ETIM Class	EC001317

## Technical product data

IEC-amperage	16 A
Amperage acc. UL/CSA (for UL-version)	20 A
Number of poles	4
Voltage acc. EN 60309-2	400 V (50+60 Hz) red
Clock hour position	6 h
Identification colour	Red
Degree of protection (IP)	IP44
Connection system	Screwed terminal
Angle of plug	Straight
Material	Plastic
Military model	False
Flange size vertical	75 mm
Drill hole distance vertical	60 mm
Flange size horizontal	75 mm
Drill hole distance horizontal	60 mm

## Dimension sheet



Amp.	16			32			63		
	3	4	5	3	4	5	3	4	5
a	60	60	60	60	60	60	85	85	85
b	60	60	60	60	60	60	77	77	77
c	5,5	5,5	5,5	5,5	5,5	5,5	6,5	6,5	6,5
d	62	75	75	75	75	75	107	107	107
e	62	75	75	75	75	75	100	100	100
f	52	53	53	65	65	65	85	85	85
h	46	60	60	60	60	60	90	90	90
n	28	28	28	27	27	27	52	52	52
p	6	9	9	9	9	9	12	12	12