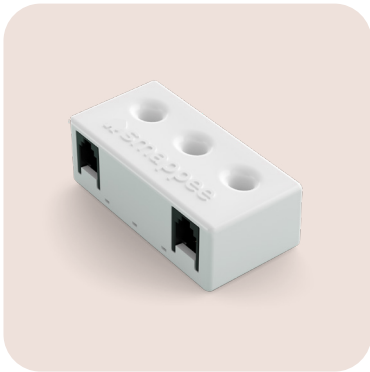


# Smappee Infinity

## Current Transformers

Smappee offers a wide array of Split Core CTs and Rogowski coils that are compatible with the CT Hub. In addition, Smappee offers a Solid Core 3-Phase CT.



- Typically used for 3-phase measurements.
- Accuracy class 0.2 %.
- Small, compact.
- Cost-effective alternative to the CT Hub with CTs.
- Daisy-chain up to 9 Solid Core 3-Phase CTs or combine with Smappee CT Hubs to measure up to 28 inputs and up to a distance of 100 meters (109 yards).

### **Input current**

3 × 50 A

### **Outer cable diameter**

Maximum 6.7 mm / 0.26 inches

### **Dimensions**

59 × 35 × 23 mm  
(2.32 × 1.38 × 0.91 inches)

### **Weight**

45 g (1.59 oz)

### **Operating temperature**

-10 °C to 70 °C (14 °F to 158 °F)

### **Storage temperature**

20 °C to 90 °C (-4 °F to 194 °F)

### **Relative humidity**

0 % - 95 %, non-condensing

### **EMC**

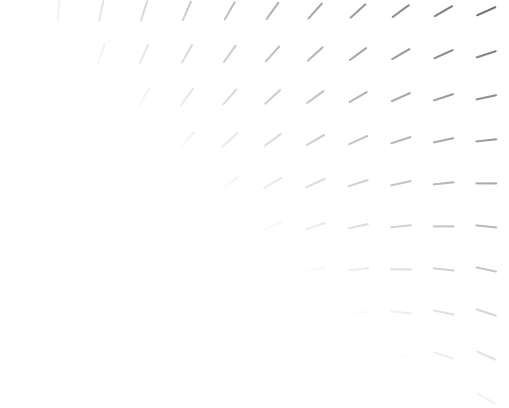
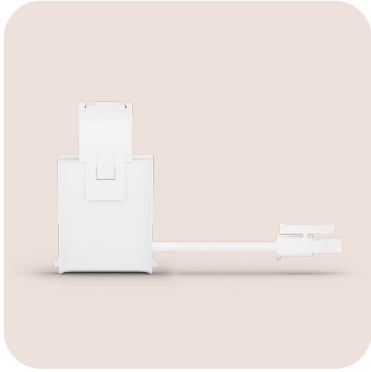
IEC 61326-1, FCC 47 part 15

### **Connectivity**

2x Smappee Bus A

### **Accessories included**

Smappee Bus cable 40 cm  
(15.75 inches)



Type	Article number	L × W × H (mm)	L × W × H (inches)	Max. wire diameter	Cable length
50 A	AC-CT-50A	25.5 × 40.5 × 26	1 × 0.41 × 1.02	10 mm / 0.39 inches	180 cm / 70.87 inches
100 A	AC-CT-100A	32 × 44.5 × 31	1.26 × 1.75 × 1.22	16 mm / 0.63 inches	180 cm / 70.87 inches
200 A	AC-CT-200A	50.5 × 66.5 × 41	1.99 × 2.62 × 1.61	24 mm / 0.94 inches	180 cm / 70.87 inches
400 A	AC-CT-400A	57.8 × 85 × 42.5	2.28 × 3.35 × 1.67	36 mm / 1.42 inches	180 cm / 70.87 inches
50 A	AC-CT-S-50A	25.5 × 40.5 × 26	1 × 0.41 × 1.02	10 mm / 0.39 inches	30 cm / 11.81 inches



Type	Article number	External diameter	Internal diameter	Cable length
0 - 400 A	AC-RSCT-4CM	50 mm / 1.97 inches	40 mm / 1.57 inches	180 cm / 70.87 inches
0 - 1,600 A	AC-RSCT-12CM	140 mm / 5.51 inches	120 mm / 4.72 inches	180 cm / 70.87 inches
0 - 4,000 A	AC-RSCT-19CM	210 mm / 8.27 inches	190 mm / 7.48 inches	180 cm / 70.87 inches
0 - 10,000 A	AC-RSCT-30CM	320 mm / 12.60 inches	300 mm / 11.81 inches	180 cm / 70.87 inches