

SMILE ON

28-Feb.-2019

1.0 HV

LED 6W | 220-240VAC | 50-60Hz | COB 3-step | incl. PS | phase cut dim

CE \oplus L 0.3m G D V A

3000K | 90CRI | 370lm | IP65

white texture

702258W5

dark grey texture

702258D5

3000K | 90CRI | 370lm | IP20

aluminium brushed (only for interior use)

702258L5

2.0 HV

LED 6W | 220-240VAC | 50-60Hz | COB 3-step | incl. PS | phase cut dim

CE \oplus L 0.3m G D V A

3000K | 90CRI | 370lm | IP65

white texture

703258W5

dark grey texture

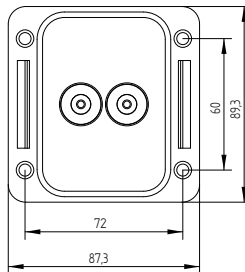
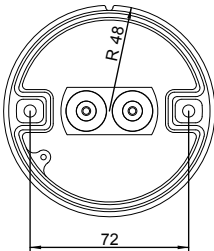
703258D5

3000K | 90CRI | 370lm | IP20

aluminium brushed (only for interior use)

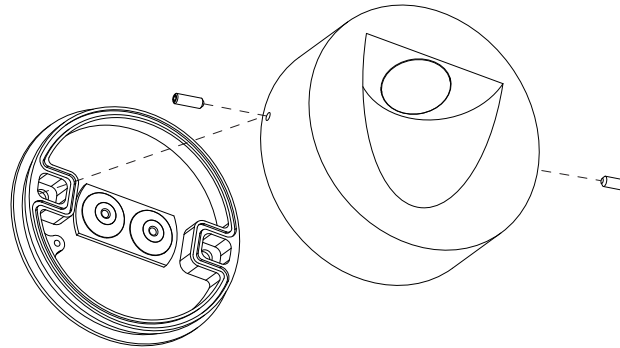
703258L5

back plate dimensions

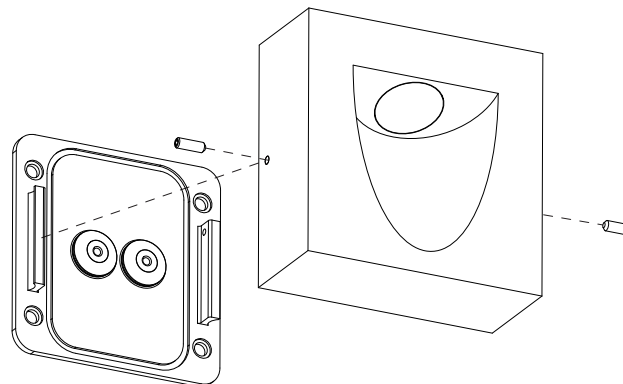


	A	B	C
CABLE			
TYPE	ROUND H05RN-F H07RN8-F H07RN-F	ROUND H05RN-F	ROUND
OUTSIDE Ø	min 6.8mm max 8.9mm	min 5mm max 6.8mm	min 1.5mm max 2.6mm
CONDUCTION SECTION	2or3x 0.75mm ² 2or3x 1.0mm ² 2or3x 1.5mm ²	2or3x 0.75mm ² 2x 1.0mm ²	0.75mm ² 1.5mm ²

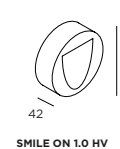
SMILE ON 1.0 HV



SMILE ON 2.0 HV



DIMENSIONS



SMILE ON 1.0 HV



SMILE ON 2.0 HV

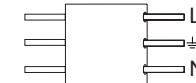
MOUNTING INSTRUCTION

- 1 Remove the back plate
- 2 Fixate the back plate to the wall with screws

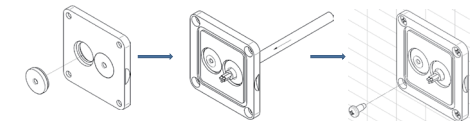
POWER CONNECTION

- 3 Use connector or cut wires to connect to power supply

Interior: STANDARD version



IP-rated connections for wall fixtures: cable isolation for round cables \varnothing 4.5-7.5 mm, should be in the grommet. For cable use \varnothing 7.0-9.5 mm: replace the grommet with the other grommet in the bag.



Push the grommet into the back plate.

Pull the cable through the back plate.

Mount the back plate on the wall.

- 4 Fixate the fixture base to the base plate



Caution, risk of electric shock

The light source of the integrated LED is not replaceable; When the light source reaches its end of life the whole luminaire shall be replaced.



WEVER & DUCRÉ
LIGHTING

www.weverducre.com

Wever & Ducre bvba Spinnerijstraat 99/21 8500 Kortrijk

**INSTALLATION
INSTRUCTIONS**

PB19-010-545-00