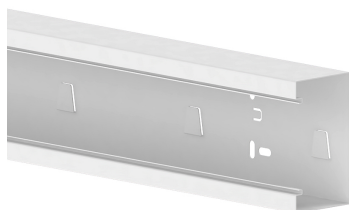


Date: 24.03.2023

Wall trunking-base BRS 60x110-9010, steel, 80 mm cover, pure white



Product description

Base of wall duct made of sheet steel to DIN EN 50085-2-1 for cable routing directly on the wall or on wall brackets, for an 80 mm cover for device installation of commercially available switch ranges in combination with front-locking accessory mounting boxes or M45 built-in devices with the aid of front-locking adapter frames, base part with double-row floor perforation for fastening, a retaining lug for hanging a partition wall for separating cables and earthing lugs for additional equipotential bonding by means of earthing cable. Note: Potential equalisation, earthing, sound and fire protection measures must be carried out professionally. Bottom and cover with self-grounding contact surfaces.

Basic data

| | |
|---------------|----------------------|
| Item number | 11783 |
| Product group | 20-Wall installation |
| Packing unit | 4 meters |
| EAN code | 4018475268722 |
| Tariff number | 73089059 |

Technical features

| | |
|-------------------------------------|---------------------------|
| Width | 110 mm |
| Depth | 62 mm |
| Length | 2000 mm |
| Number of covers | 1 |
| Covers supplied with the product | no |
| Cover width 1 | 80 mm |
| Symmetric | yes |
| Construction type rectangular | yes |
| Material | steel |
| Halogen free | yes |
| Surface protection | pre-galvanised and coated |
| Colour | pure white |
| RAL-number | 9010 |
| Construction rear wall (inner side) | with cam clamps |
| With protective foil | no |
| Number of plug-in partitions | 1 |
| Mounting perforation in bottom | yes |
| Mounting method cover | inner lying |
| Useful cross section | 6523 mm ² |