

FLOS

TACCIA LED

Mounting	Table/Floor
Lamps description	I REMOTE PHOSPHOR LED 2700K 930lm - CRI95 - 17,8W
Environment	Indoor
Finish	Anodized aluminum, Black
Technical description	Table/floor lamp providing indirect and reflected light. Metal reflector with gloss white finish inside and white powder-coated outside. Adjustable hand-blown clear glass diffuser. Matte black or anodized silver extruded aluminum body. Nickel-plated and zapon-varnished polished steel base.

ELECTRICAL

Emergency	Without
Voltage (V)	230

PHYSICAL


Supply	Power cord
Cord length (mm)	2380
Construction material	Aluminum, Glass
Weight (kg)	11



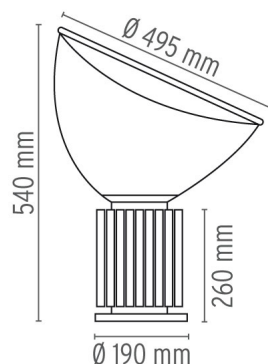
Taccia LED

designed by Achille & Pier Giacomo Castiglioni

Table/floor lamp providing indirect and reflected light

 F6602004	Anodised aluminium
 F6602030	Black

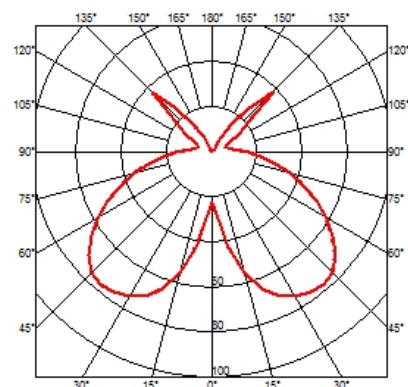
DIMENSIONS



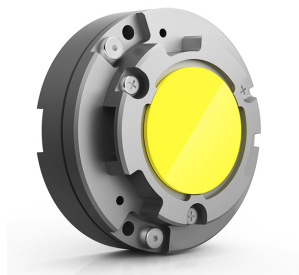
CERTIFICATIONS



IP
20



Taccia LED . Lamps



**I REMOTE PHOSPHOR
LED 2700K 930lm - CRI95 -
17,8W**

Lamp wattage:

17,8 W

Lamp category:

LED

Lamp type:

REMOTE PHOSPHOR LED



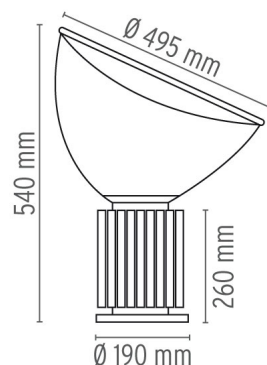
Taccia LED

designed by Achille & Pier Giacomo
Castiglioni

Table/floor lamp providing indirect
and reflected light

- F6602004 Anodised aluminium
- F6602030 Black

DIMENSIONS



CERTIFICATIONS

