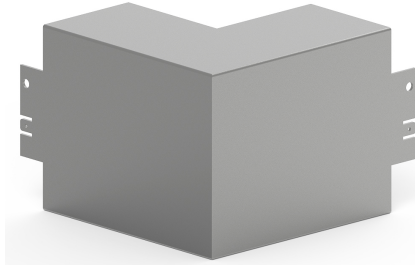


Date: 15.03.2023

Outer corner LFS 60x100, steel, zinc

Product description

Outer corner as moulded hood for installation trunking, for routing cables around wall projections.

**Basic data**

Item number	2324
Product group	10-Cable routing
Packing unit	1 piece
EAN code	4018475023246
Tariff number	73089059

Technical features

Height	60 mm
Width	100 mm
Model	moulded hood
Angle	90 - 90 °
Material	steel
Halogen free	yes
Surface protection	pre-galvanised
Type of fastening	snap on
Colour	other