

# ESDEC

INNOVATIVE MOUNTING SYSTEMS

**RELIABLE AND  
QUICK  
INSTALLATION ON  
CORRUGATED ROOFS**

**CLICKFIT**

EVO

CORRUGATED ROOF

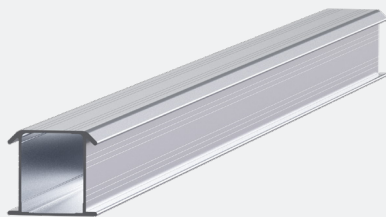
[www.esdec.com](http://www.esdec.com)

# THE BASIC COMPONENTS OF CLICKFIT EVO



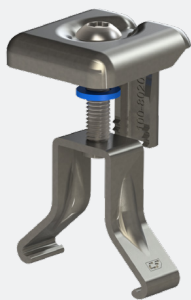
## 1. CORRUGATED SHEET MOUNTING

- One universal mounting bracket
- Easy installation from above
- Stepless-adjustable height
- Homogeneous force distribution
- Self-aligning click connection: easier and quicker
- Mounting rail can only be placed vertically
- Integrated cable management
- Applicable to both new and existing roof constructions
- For solar panels in landscape orientation
- This mounting bracket supports corrugated sheets of the 177/51 type that meet the valid standards as stipulated in NEN EN 49



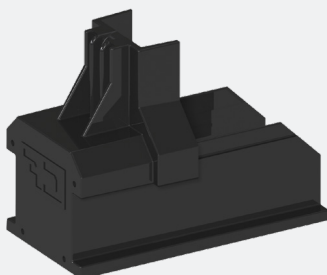
## 2. MOUNTING RAIL

- 30% more durable
- 30% lighter
- Suitable for larger roof spans



## 3. UNIVERSAL MODULE CLAMP

- Universal module clamp: suitable for every framed solar panel
- Can be used as a mid clamp and end clamp in combination with the end cap
- Standard assembly
- Includes solar panel levelling system
- Available in grey and black

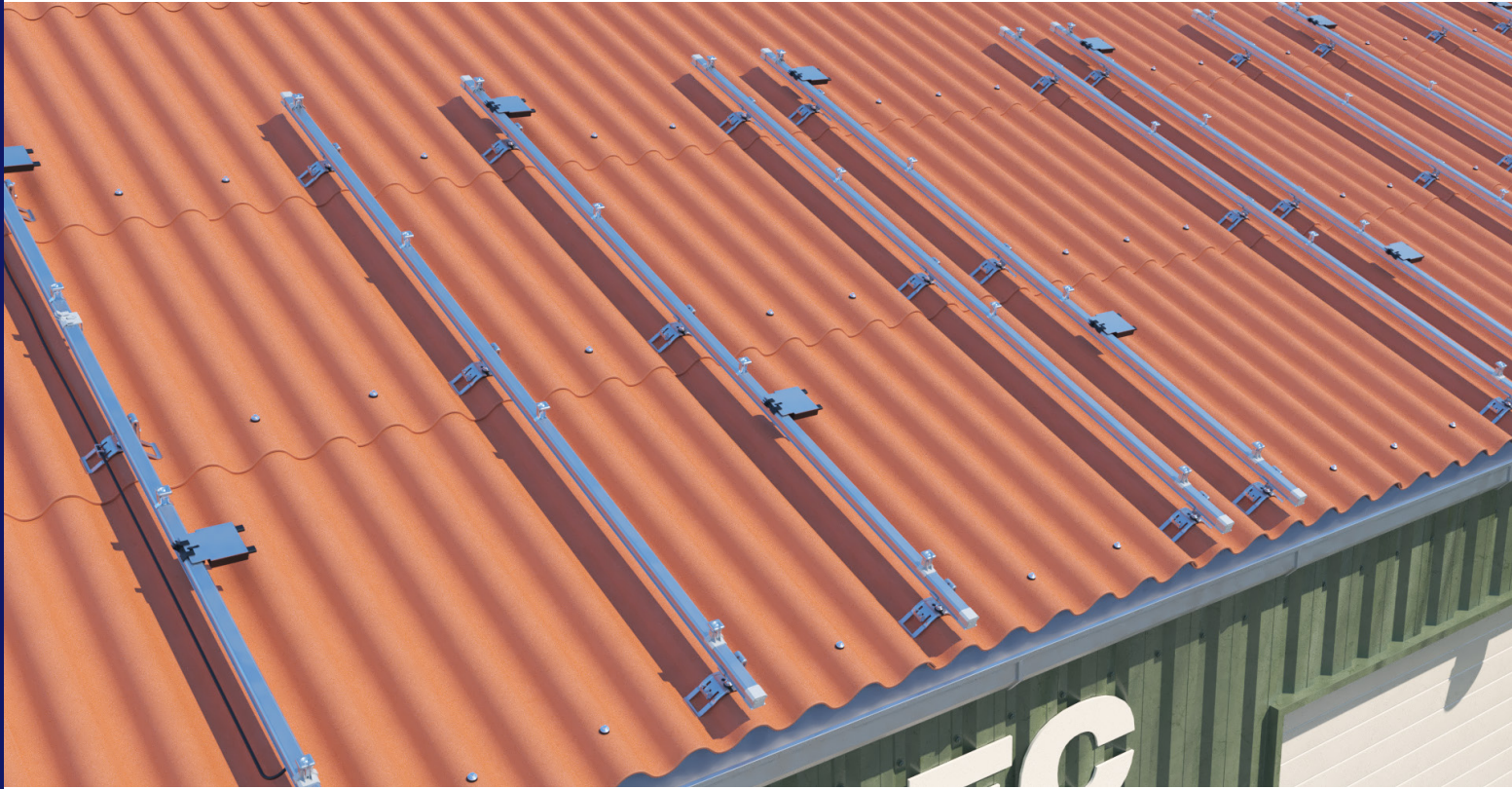


## 4. END CAP

- The end cap supports the module clamp
- For an aesthetic finish
- Available in grey and black



## CORRUGATED ROOF



## EASE OF INSTALLATION ON THE ROOF

### ClickFit EVO for corrugated roofs: universal, easy & quick

ClickFit EVO for corrugated roofs was specifically designed for the application of the well-known ClickFit EVO system on corrugated roofs, as frequently found in the agriculture sector, for example. The system is thought through and consists of only 4 components. The mounting system can be applied to both existing roofs and newly-constructed roofs. Thanks to its unique, universal characteristics, the system can be mounted very quickly and easily.

### Reliable

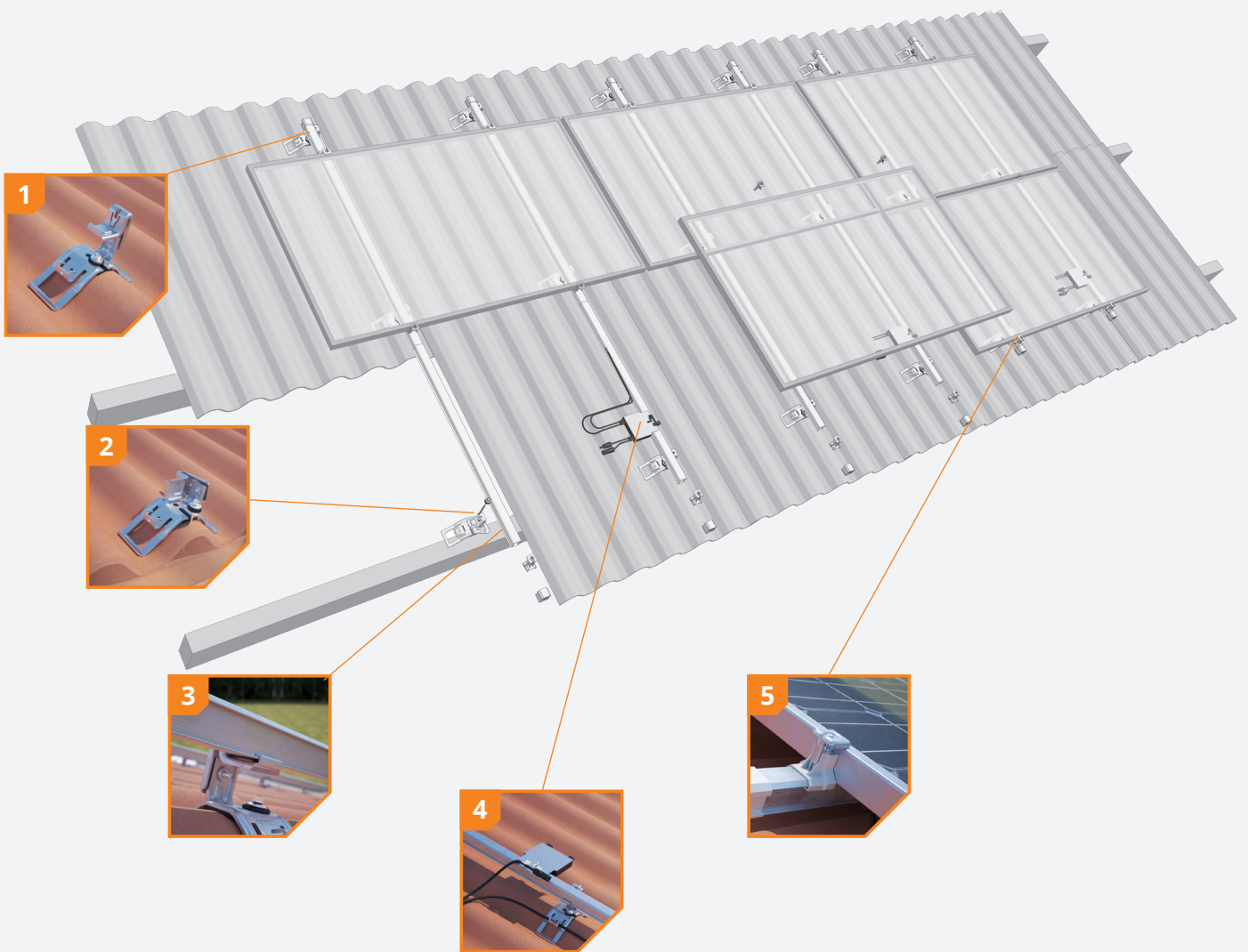
The ClickFit EVO mounting bracket ensures the roof remains 100% waterproof after mounting. The mounting bracket is attached to the roof screws in the purlin. It fits exactly the crest of the roof and is supported by the troughs. This results in a homogeneous distribution of force and minimum load, which both contribute to the robustness of the system. ClickFit EVO for corrugated roofs was extensively tested and comes with a 20-year warranty. This way, the quality of the system and the required reliability are guaranteed.

#### THE BENEFITS FOR THE INSTALLER

- ✓ 4 components
- ✓ 1 tool
- ✓ Easy installation on new & existing roofs
- ✓ Safe and reliable
- ✓ 20-year product warranty

#### THE BENEFITS FOR YOUR CUSTOMER

- ✓ Rock-solid base for solar panels
- ✓ 100% waterproof
- ✓ Safe and reliable
- ✓ 20-year product warranty
- ✓ The roof stays intact



**1 Universally adjustable**

The height of the universal mounting bracket is steplessly adjustable.

**2 Attachment using existing corrugated sheet screws**

The mounting bracket is equipped with a notch, allowing for easy attachment of the mounting bracket to the corrugated sheet screws.

**3 Unique click connection**

The universal mounting bracket is equipped with a self-aligning click connection. This way, the mounting rail can always be mounted easily from above.

**4 Integrated cable management**

Cables and plugs can always be neatly and safely located in both the mounting bracket and the cable clip. Power optimisers can also easily be clicked onto the cable clip.

**5 The right dimensions at all times**

The universal module clamp is suitable for all framed solar panels and can be used as a mid clamp and as an end clamp if combined with the end cap or end clamp support.



## ROOF CONNECTOR



ClickFit EVO – Corrugated Sheet Mounting Bracket  
1008090

## MODULE CLAMP & END CONNECTORS



ClickFit EVO – Module Clamp Universal grey  
1008020



ClickFit EVO – Module Clamp Universal black  
1008020-B



ClickFit EVO – Mounting Rail End Cap grey  
1008060



ClickFit EVO – Mounting Rail End Cap black  
1008060-B



ClickFit EVO – End Cap without end clamp support grey  
1008066



ClickFit EVO – End Cap without end clamp support black  
1008066-B



ClickFit EVO – End Clamp Support grey  
1008065



ClickFit EVO – End Clamp Support black  
1008065-B

## MOUNTING RAIL



ClickFit EVO – Mounting Rail	
Mounting Rail 1060mm	1008001
Mounting Rail 2065mm	1008002
Mounting Rail 3080mm	1008103
Mounting Rail 4095mm	1008104
Mounting Rail 5110mm	1008105
Mounting Rail 6130mm	1008106
Mounting Rail 3500mm	1008007

## MOUNTING MATERIALS



Self-drilling screw 5.5x48mm T30  
1008095

## ACCESSORIES



ClickFit EVO – Mounting Rail Connector Piece  
1008061



ClickFit EVO – Mounting Rail Cable clip optimiser ready  
1008062

## Calculator

The new ClickFit EVO calculator is quick and easy to use. The organised dashboard allows you to find saved and/or completed projects with ease. If the roof situation is known, the calculator will automatically generate proposals based on the situation and the most frequently-used panels. The calculator has been optimised for Google Maps.

- Quick and easy to use
- Shows all your projects at a glance
- Automatically generates proposals based on the roof situation and the most frequently-used panels
- Includes auto-fill function
- Optimised for Google Maps

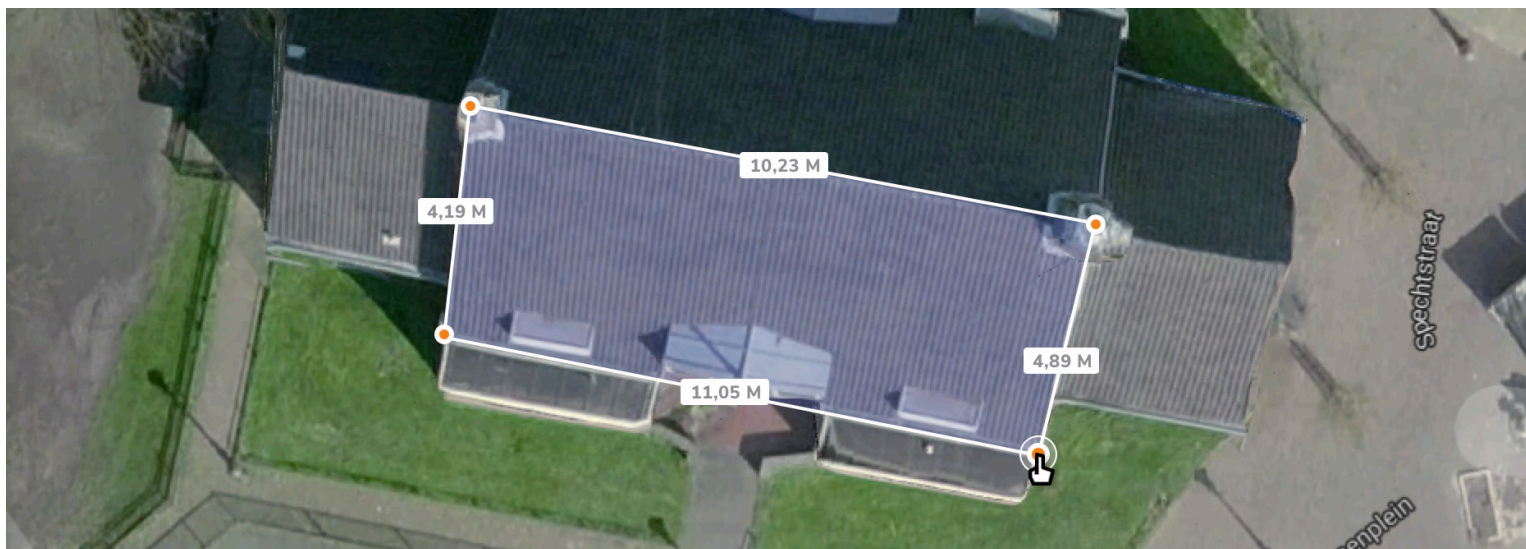


Go to [esdec.com/en/calculator/](https://esdec.com/en/calculator/)

## Warranty

ClickFit EVO meets all applicable standards and requirements. ClickFit EVO comes with a unique warranty of up to 20 years to guarantee the quality of the system.

- High-grade and high-tech materials
- Extensively tested
- Warranty of up to 20 years





**QUICK  
RELIABLE  
INNOVATIVE**

**MAKE THE CONNECTION  
WITH ESDEC**

Esdec has developed, produced and supplied professional mounting systems for solar panels on roofs since 2004. ClickFit and FlatFix are inspired by installers who regularly place solar panels. Easy, quick and reliable installation with innovative, high-grade and sustainable mounting systems; that is what Esdec offers.

**Esdec**

Londenstraat 16  
7418 EE Deventer  
The Netherlands

☎ +31 850 702 000  
✉ [info@esdec.com](mailto:info@esdec.com)

20032020

[www.esdec.com](http://www.esdec.com)