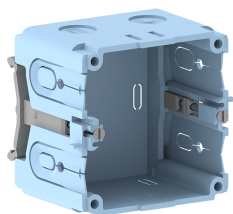


Date: 08.03.2023

## Junction box for wall duct single GED 50-1 for BR/BRA/FB height 60mm with DIN-rail

**Product description**

Halogen-free flush-mounting box for accommodating a commercially available device unit from the standard switch range, with strain-relief feed openings for cable diameters of 7-11mm and 11-13mm, for installation in wall trunking and installation trunking with a DIN rail and a height of 60 mm.

**Basic data**

Item number	1261
Product group	20-Wall installation
Packing unit	40 pieces
EAN code	4018475012615
Tariff number	39269097

**Technical features**

Model	open
Number of units	1
Type of device	with bearer ring/bearer bracket
Material	plastic
Mounting method installation unit	screw
Strain relief possibility	yes
With connection space	yes
Mounting method box	Rückwand
Mounting track	other