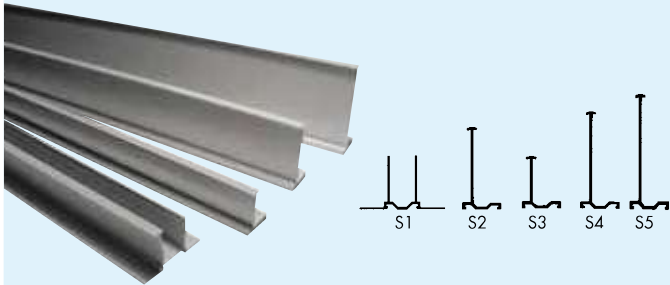


INDUSTRIAL SWITCHBOARDS

ACCESSORIES - TECHNICAL DATA

CABLE SEPARATORS

RoHS COMPLIANCE 

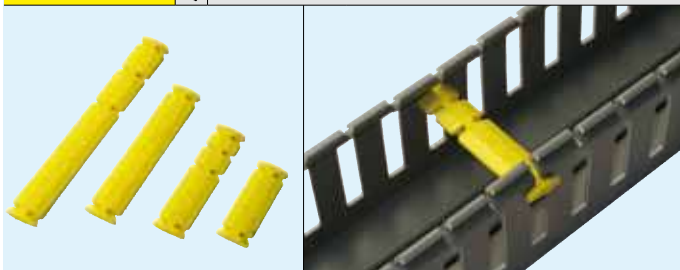
CODE	H	PACK m
S1 (2 Separators)	40	30
S2	60	50
S3	40	60
S4	80	32
S5	100	32

COVERS TO INSTALL OVER IF METAL SCREWS ARE USED TO SECURE THE DUCT

RoHS COMPLIANCE 

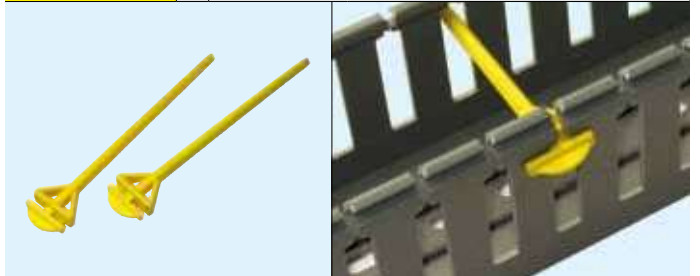
CODE	PACK Pcs.
COVIT	1000

CROSS-ARMS TO RETAIN THE CABLES WHEN THE COVER IS REMOVED

RoHS COMPLIANCE 

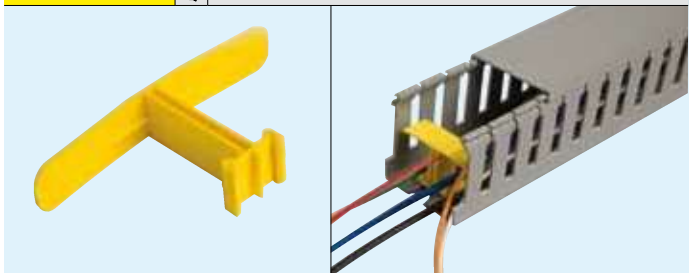
CODE	FOR TRUNKING B	PACK Pcs.
TR4	40	500 (5x100)
TR6	60	500 (5x100)
TR8	80	400 (5x80)
TR10	100/120	250 (5x50)
TR15	125	200 (1x200)

CROSS-ARM FOR TRUNKINGS

RoHS COMPLIANCE 

CODE	PACK Pcs.
PTR	100 (4x25)

CABLE-RETAINING CROSS-ARMS

RoHS COMPLIANCE 

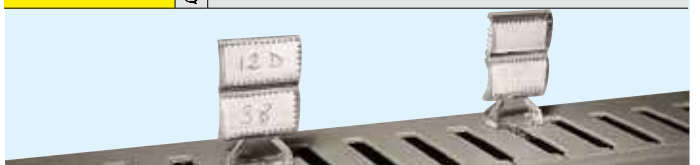
CODE	FOR TRUNKING B	PACK Pcs.
FCV12040	60/120x40	40
FCV12060	40/200x60	25

CABLE TIE HOLDER

RoHS COMPLIANCE 

CODE	PACK Pcs.
DMF	100 (2x50)

LABEL HOLDER FOR WIRE DUCTS

RoHS COMPLIANCE 

CODE	PACK Pcs.
PTE	100 (2x50)