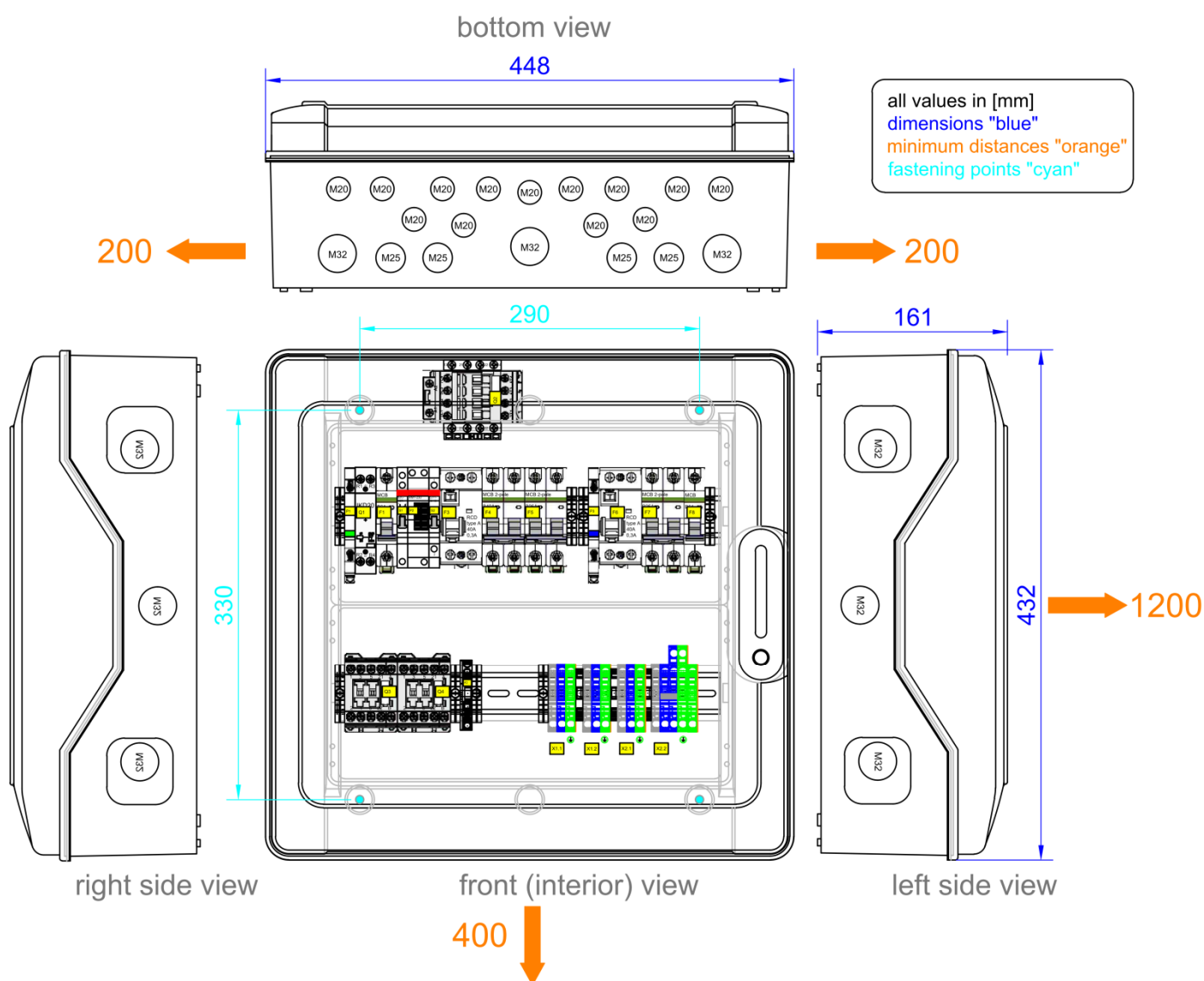


# DATA SHEET

## External-Disconnection-Unit "EDU" for SolarEdge "StorEdge"

enwitec-order-number	<b>10012498/ V1.2</b>
Description	External-Disconnection-Unit "EDU" - Version "NL/BE"
Match code	<i>1_3PH_SolarEdge_BBDAP_12KW_1PH_1.2_NL/BE</i>
Application	Backup power system "StorEdge" - SolarEdge
Authorised PV/battery-inverter	StorEdge SE5000-RWS
Grid configuration (Mains supply)	<b>TT- or TN-S System</b> , Single phase or Three-phase (230/400V 50Hz)
Power connection	Single phase - 230V/N
Mains decoupling	<b>All-pole</b>



# DATA SHEET

External-Disconnection-Unit "EDU" for SolarEdge "StorEdge"

## SCOPE OF DELIVERY

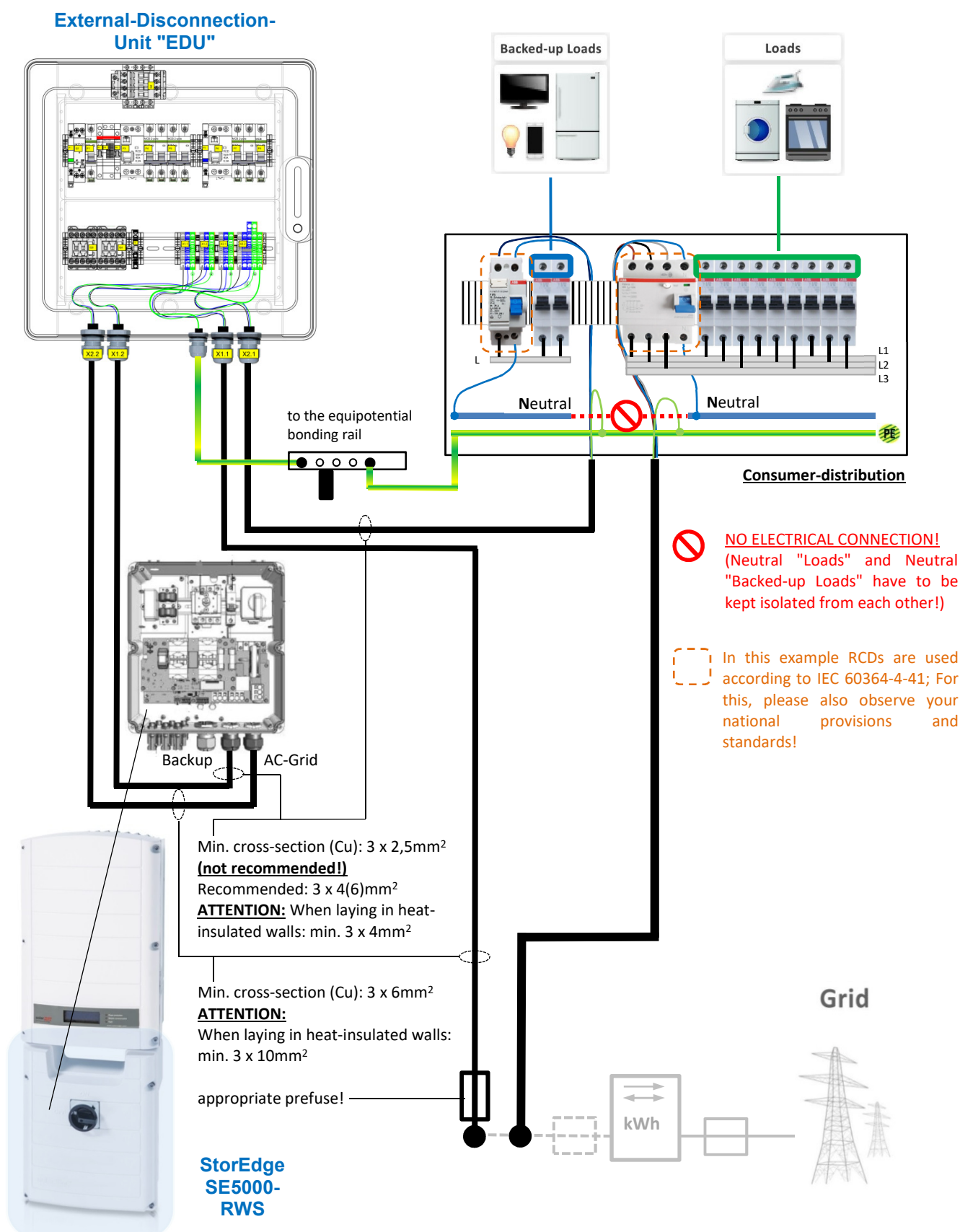


Item	Number	Designation
A	1	External-Disconnection-Unit; Version "NL/BE"
B	4	Cable gland M25 x 1,5 (clamping range Ø 9 – 17mm)
C	1	Cable gland M20 x 1,5 (clamping range Ø 6 – 13mm)
D	4	Counter-nut M25
E	2	Counter-nut M20
F	1	Pressure equalisation element
G	1	Reduction from M20 to M12 (for pressure compensation valve)
H	4	Cover caps for fastening screws
I	1	Warning label "dangerous tension"
J	1	Manual for External-Disconnection-Unit "NL/BE"
K	1	Sticker - Indicating an island network compatible storage system
L	1	Circuit diagram for the External-Disconnection-Unit "EDU" (DIN A3 printout)

# DATA SHEET

External-Disconnection-Unit "EDU" for SolarEdge "StorEdge"

## CIRCUITRY OVERVIEW



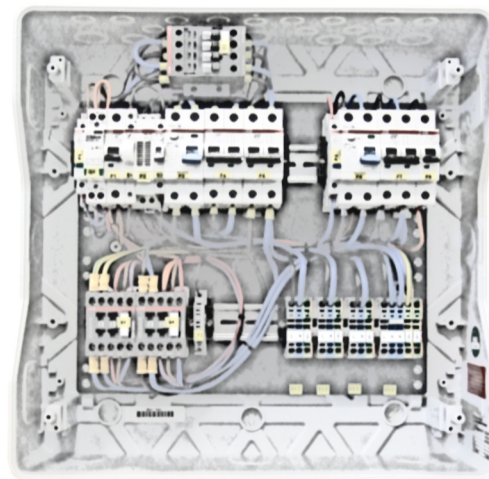
# DATA SHEET

## External-Disconnection-Unit "EDU" for SolarEdge "StorEdge"

### SPECIFICATION

#### Electrical parameters

Rated operating voltage	[V]	Single phase -230 (L/N)
Grid configuration (Mains supply)	[V]	Single- or three phase 1PH/3PH - 230/400
Rated insulation voltage	[V]	400
Rated frequency	[Hz]	50
Max. prospective short-circuit current	[kA]	10
Authorised grid configuration (mains)		TT / TN-S
Grid configuration for loads in backup power mode		TN-S
Phase coupling (Backup power mode)		* (not possible)
Max. permissible consumer load (backupted-loads)	[kW]	4,5 (7 short-term - 300s)
Max. thermal power output P <sub>RATED</sub>	[kW]	12 (= Loads + PV-Inverter)
Losses in standby mode	[W]	ca. 7



#### Connection/terminals (spring-loaded terminals)

Terminal strip	Strands/ wire type	Max. cross- section [mm] <sup>2</sup>	Stripping length [mm]	Wire end ferrule
<b>X1.1</b> Mains	single-wire fine-wire fine-wire	10 10 6	13-15	* * ✓
<b>X1.2/X2.2</b> StorEdge	single-wire fine-wire fine-wire	10 10 6	13-15	* * ✓
<b>X2.1</b> Loads (backupted)	single-wire fine-wire fine-wire	10 10 6	13-15	* * ✓

#### Cable glands

Terminal strip	Size (metrical)	Clamping range [mm]
X1.1	M25	9-17
X1.2	M25	9-17
X2.1	M25	9-17
X2.2	M25	9-17
PE	M20	6-13

#### General data

Dimensions (BxHxT)	[mm]	448x432x161
Weight	[kg]	10
Operating temperature range	[°C]	-20...+40
Temperatur - transport/storage	[°C]	-25...+55
Temporary max. 24 hours	[°C]	-25...+60
Humidity-condensing allowed	✓/✗	* ✗
Humidity - permitted range	[%]	5 ... 95
Max. altitude above sea level	[m]	2000
Protection class IP (EN 60529)		65
Outdoor-application permitted	✓/✗	* ✗
Installation type		Indoor area
Protection against electric shock (EN 61140)		II
Enclosure material		Polycarbonate
RoHS-conformity (2011/65/EU)		✓
Colour of enclosure		similar RAL7046
Way of mounting		wall mounting
Cover		transparent
Locking system		tool-free
<b>Relevant standards</b>		
Switching devices		EN 61439-1 EN 61439-2 EN 61439-3
Distribution boards - operated by ordinary people (DBO)		
Stationary electrical energy storage systems		VDE-AR-E 2510-2
<b>Miscellaneous</b>		
Customer tariff number		85371098

( ✓ Yes ✗ No)