

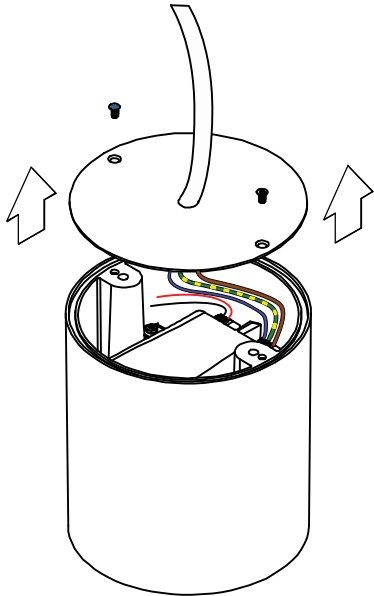
Smart surface tubed suspension 115 LED GI

131411XX_131412XX_131413XX

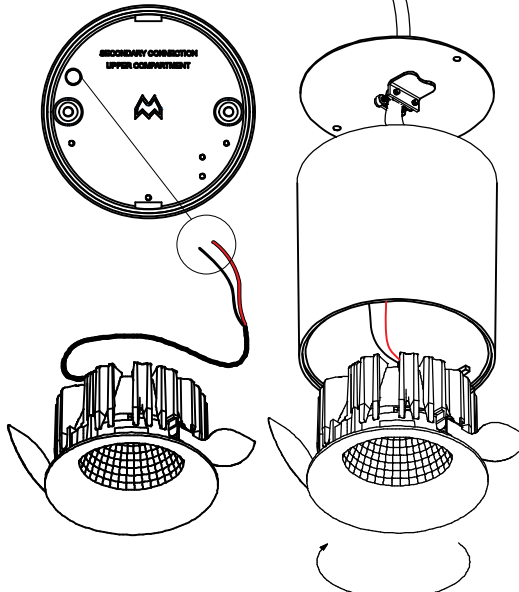
VISUALIZATION WITH 'SMART CAKE'
READ 'CAN BE USED WITH
SMART 115 FIX GE'
FIXTURE NOT INCLUDED

! (not possible with Smart 115 adjustable)

Open 'SMART TUBED' cover

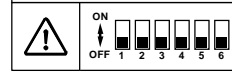


Disconnect fixture connectors
and pull wires through opening

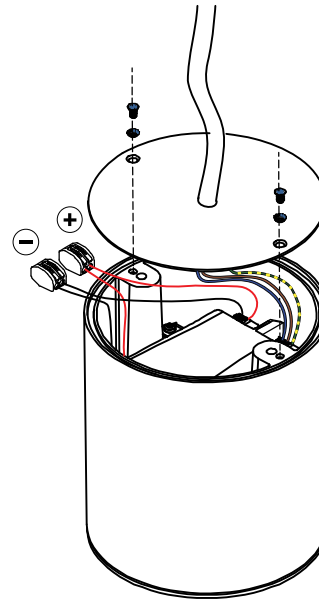


install: 1) turn counterclockwise until click
2) turn shortly clockwise to secure into tube
uninstall: turn counterclockwise and pull Smart out

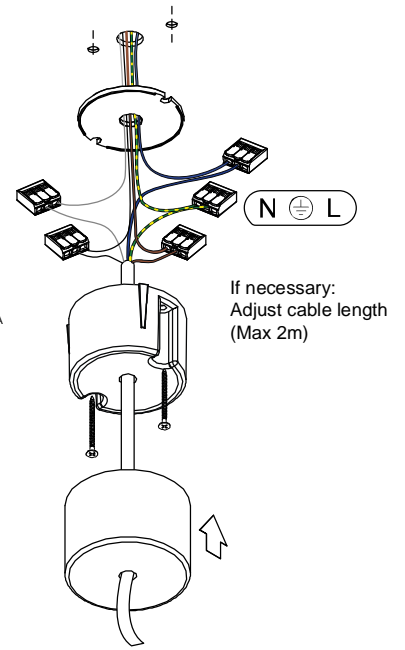
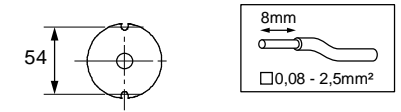
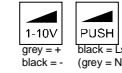
CHECK DIP-SWITCHES ON DRIVER



Connect fixture (+ dim wires) and
close tube cover (re-use included
toothed washers & screws)



Only for '131412XX':
CONNECT 1-10V/PD
wires to gear:



CAN BE USED WITH

- 12741XXX - Smart Cake 115 LED GE
- 12742XXX - Smart Cake 115 IP54 LED GE*
- 12743XXX - Smart Cake 115 diffuse IP54 LED GE*
- 12751XXX - Smart Lotis 115 LED GE
- 12752XXX - Smart Lotis 115 IP54 LED GE*
- 12753XXX - Smart Lotis 115 diffuse IP54 LED GE*
- 12761XXX - Smart Kup 115 LED GE
- 12762XXX - Smart Kup 115 IP54 LED GE*
- 12763XXX - Smart Kup 115 diffuse IP54 LED GE*

*Combined with 'Tube suspended' IP54 drops down to IP20

