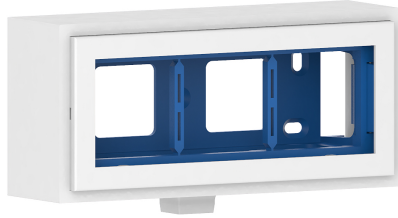


Date: 04.04.2023

Appliance box triple LFG 15x15-9010, plastic hf, pure white



Product description

Surface-mounted box for direct mounting on the installation trunking as profile termination, for device installation of three compact M45 built-in devices in the format 45x45 mm (3 single installation devices or one multiple socket outlet), with connector for the installation trunking.

Basic data

Item number	16717
Product group	10-Cable routing
Packing unit	1 piece
EAN code	4018475342231
Tariff number	39259020

Technical features

Assembly arrangement	Surface mounted box
Number of units	3
Mounting direction	horizontal and vertical
Material	plastic
Halogen free	yes
Colour	white
RAL-number (similar)	9010
With cover frame	yes
With duct entry	yes
Width of device	135 mm
Height of device	45 mm