

## GLO-BALL BASIC I

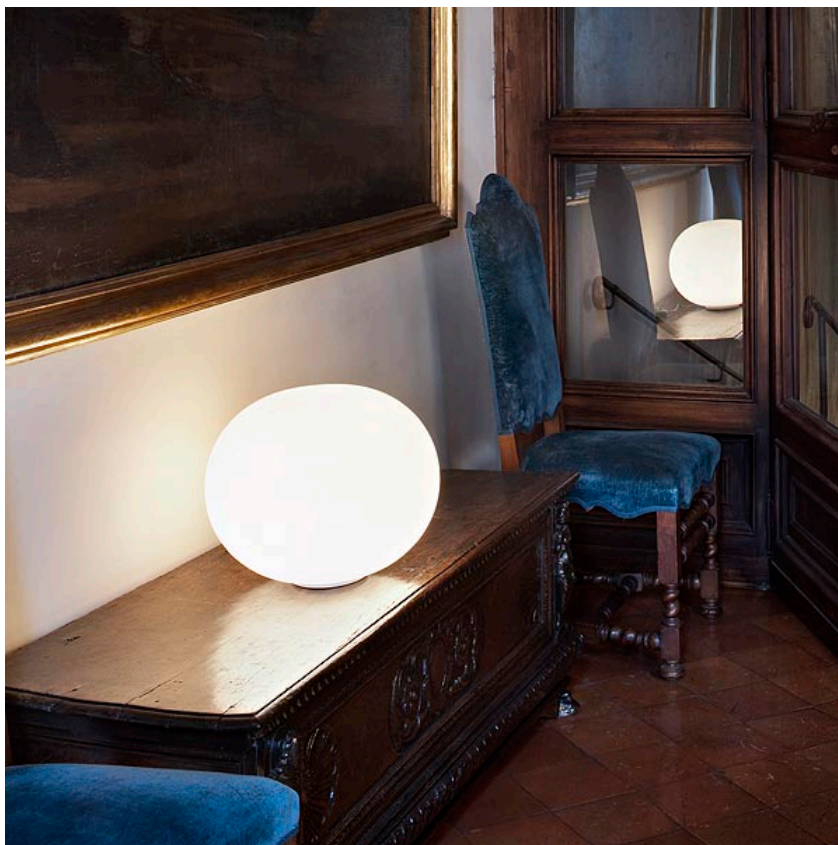
<b>Mounting</b>	Table
<b>Lamps description</b>	1 x MAX 150W E27 HSGS
<b>Environment</b>	Indoor
<b>Finish</b>	White
<b>Technical description</b>	Table/desk lamp providing diffused light. Diffuser consisting of an externally acidetched, hand blown, flashed opaline glass and a die-cast aluminum threaded ring nut with alodine plating finish. 30% fiberglass reinforced injection-molded polyamide base. Gray painted, die-cast aluminum diffuser support. On the cable there is the electronic dimmer which allows the regulation of light brightness.

## ELECTRICAL

<b>Emergency Switching</b>	Without
<b>Voltage (V)</b>	220/240

## PHYSICAL

<b>Supply</b>	Power cord
<b>Cord length(mm)</b>	1900
<b>Construction material</b>	Aluminum, Blown glass, Plastic
<b>Weight (kg)</b>	2.6



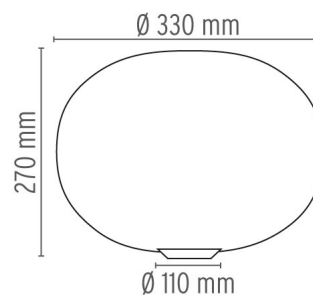
## Glo-Ball Basic I

designed by Jasper Morrison

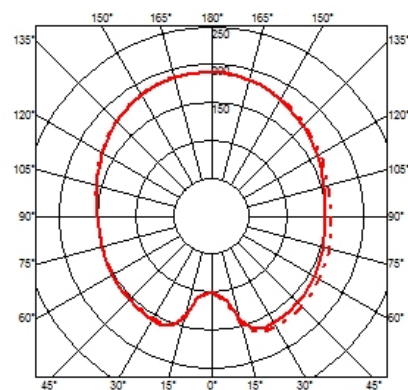
Table/desk lamp providing diffused light

● F3021000 White

## DIMENSIONS



## CERTIFICATIONS



## Glo-Ball Basic I . Lamps



### HSGS 150W E27

**Lamp Watt:**  
150 W

**Lamp category:**  
Halogen mains

**Socket:**  
E27

**Lamp type:**  
HSGS



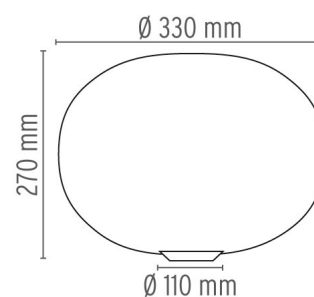
### Glo-Ball Basic I

designed by Jasper Morrison

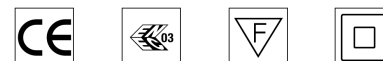
Table/desk lamp providing diffused light

● F3021000 White

### DIMENSIONS



### CERTIFICATIONS



IP  
40

