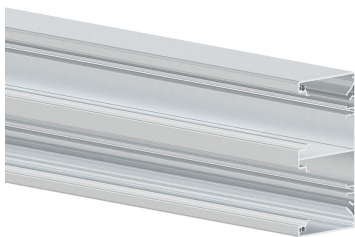


Date: 27.03.2023

## Wall trunking-base MBRA 65x130, aluminium, 2x 45 mm cover, anodised



### Product description

Base of wall duct made of aluminium to DIN EN 50085-2-1 for cable routing directly on the wall or on wall brackets, for two internal 45 mm Cover for device installation of compact M45 built-in devices in 45x45 mm format, base part with fixed partition, two mounting rails for snap-in mounting of a partition for separating cables and earthing grooves for equipotential bonding by means of earthing cable. Couplings as assembly aids and for easy connection of two lower sections are additionally available as accessories. Note: Potential equalisation, earthing, sound and fire protection measures must be carried out professionally.

### Basic data

|               |                      |
|---------------|----------------------|
| Item number   | 18205                |
| Product group | 20-Wall installation |
| Packing unit  | 8 meters             |
| EAN code      | 4018475277939        |
| Tariff number | 76109090             |

### Technical features

|                                     |                      |
|-------------------------------------|----------------------|
| Width                               | 130 mm               |
| Depth                               | 65 mm                |
| Length                              | 2000 mm              |
| Number of covers                    | 2                    |
| Covers supplied with the product    | no                   |
| Cover width 1                       | 45 mm                |
| Cover width 2                       | 45 mm                |
| Symmetric                           | yes                  |
| Construction type rectangular       | no                   |
| Material                            | aluminium            |
| Halogen free                        | yes                  |
| Surface protection                  | anodised             |
| Colour                              | silver               |
| Construction rear wall (inner side) | continuous DIN-rail  |
| With protective foil                | no                   |
| Number of plug-in partitions        | 2                    |
| Mounting perforation in bottom      | yes                  |
| Mounting method cover               | inner lying          |
| Useful cross section                | 7316 mm <sup>2</sup> |