

SHARK
SIXEIGHT
series 68
IP68 GEL INSULATED JOINTS



Designers knows they have achieved perfection not when there is nothing more to add, but when there is nothing left to take away.

A. de Saint-Exupery



For over 15 years, Shark represents the best technical solution in gel insulated joints.

In order to surpass and improve currently limits and adopted standards, Etelec has accepted an ambitious challenge: to establish a project to define the best technology for the future, based on Shark quality standards, with unique and effective solutions to make the installer's task simpler and safer.

The first ever IP68-tested and certified gel joint. The IP protection level certified by the Intertek institute guarantees a value of 68 under ordinary conditions because:

68

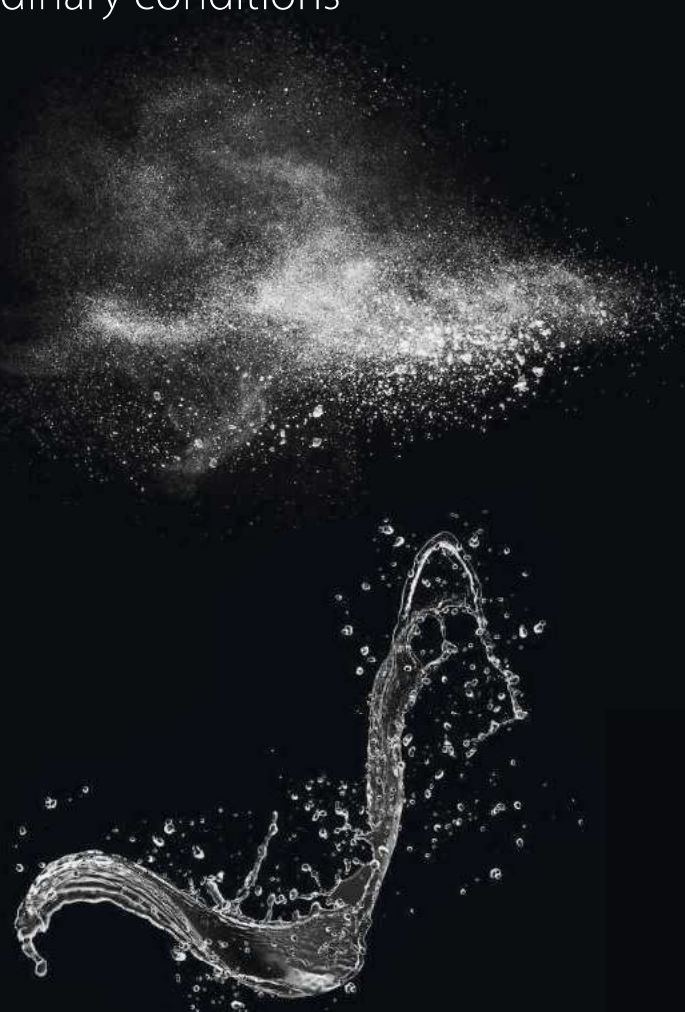
Total protection against dust

The fully closed joint with the cable inside it is completely protected from access to live parts and from dust.

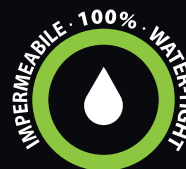
68

Protection against water

The fully closed joint with the cable inside it is completely protected from water penetration for permanent immersion in depths of up to 10 metres.



EN 50393
IEC 60529



3 patented solutions in 6 versions

model	code	no. of cores and min - max section [mm ²]		connector type
Shark 6801	SH6801	1 x 6 - 50	-	-
	SH6801A	1 x 6 - 50		End-to-end with shear head screw
	SH6801B	3 x 1.5 - 6		3 pole insulated terminal strip
	SH6801C	3 x 1.5 - 6		3 pole preassembled insulated terminal block
	SH6801D	5 x 2.5 - 6	5 x 	5 insulated connectors
Shark 6802	SH6802	1 x 35 - 95	-	-
	SH6802A	5 x 2.5 - 10		5 pole preassembled insulated terminal block
Shark 6803	SH6803	1 x 95 - 240	-	-
	SH6803A	5 x 10 - 25		5 pole preassembled insulated terminal block

connectors

NEW



single core



terminal strip



three core

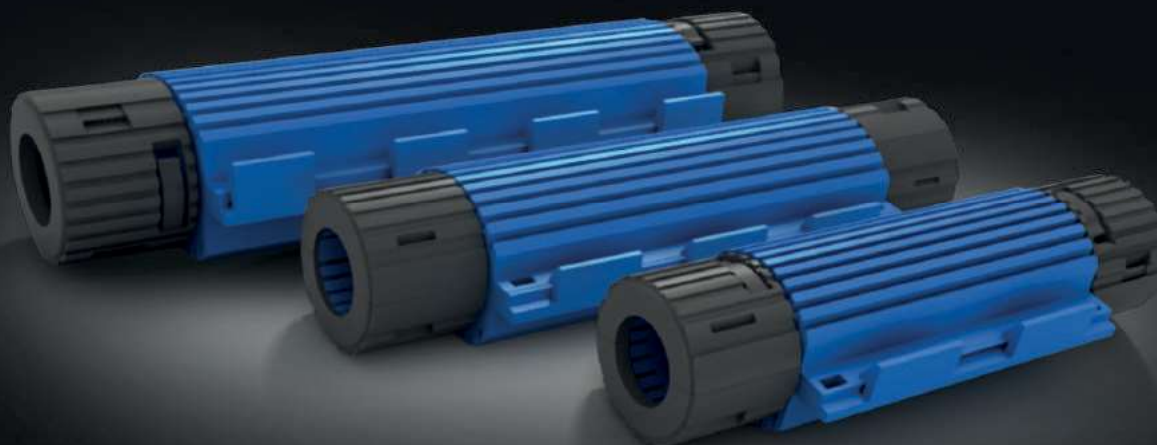


insulated connector



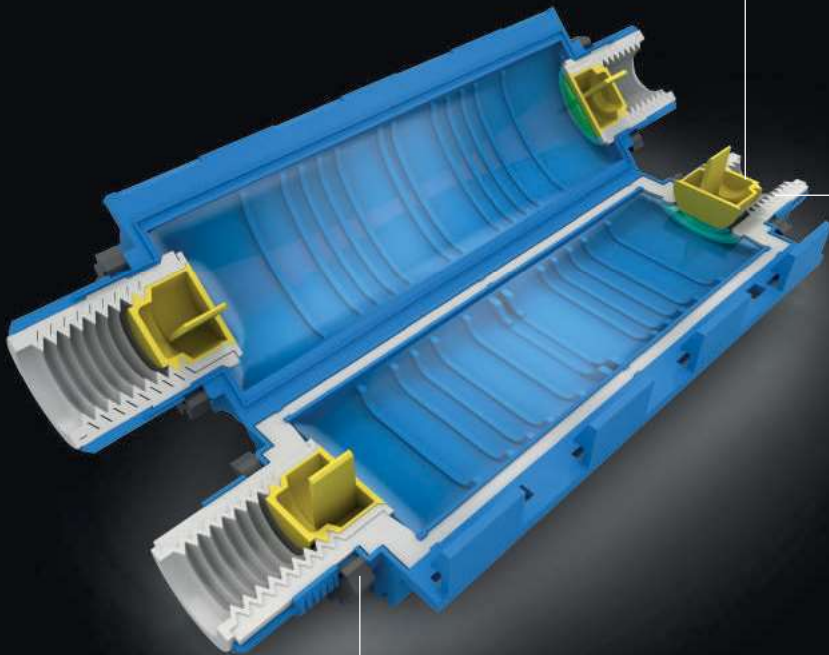
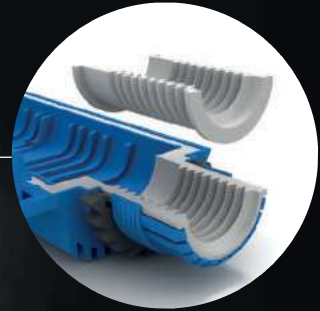
five core

- Total protection from dust and water
- IP68 tested to a depth of 10 metres by the Intertek independent laboratory
- Unique distinctive features
- Innovative patented technical solutions
- Dynamic surface design



removable walls

allow easy and rapid positioning of the cables inside the joint without having to cut or break any partition.



modular gaskets

For a perfect installation that ensures the best sealing performance with various cable cross sections and outer diameters.

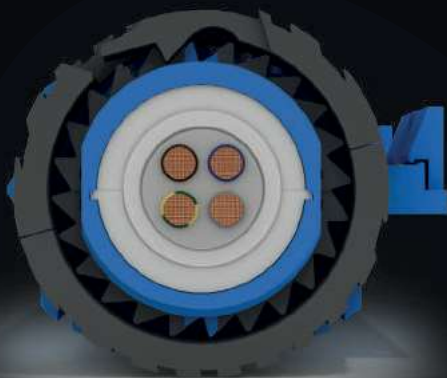
safety rack

without any additional steps, it automatically prevents the nut from unscrewing and the joint reopening to expose live parts unless the special tool is used, as required by CEI 64/8.



modular bolts

for safe and easy installation on the joint, even after the cables have been connected.





Joint selection table

SHARK® SIXEIGHT® SERIES
GEL JOINTS FOR IP68 CONNECTIONS

	SHARK 6801	SHARK 6801-A	SHARK 6801-B	SHARK 6801-C	SHARK 6801-D	SHARK 6802	SHARK 6802-A	SHARK 6803	SHARK 6803-A
	SIZE 1					SIZE 2		SIZE 3	
TYPE OF CONNECTION									
MAX. NO. OF CORES									
MAX. CONDUCTOR CROSS-SECTION* [mm²]	50 / 6 **	50	6	6	6	95 / 10 **	10	240 / 25 **	25
CONNECTOR/TERMINAL BLOCK INCLUDED	-				5 x	-		-	
PROTECTION LEVEL	IP68	IP68	IP68	IP68	IP68	IP68	IP68	IP68	IP68
ITEM CODE	SH6801	SH6801A	SH6801B	SH6801C	SH6801D	SH6802	SH6802A	SH6803	SH6803A

* Cross-sections evaluated using FG7 flexible cables

** With suitable connectors; single-core / multiple-core cables

- Complies with the standard for 0.6/1 kV low voltage joints (CEI EN 50393)
- Self-extinguishing (compliant with EN 60695-2-11)
- Low smoke and toxic gas emission (compliant with CEI-20-37/2-1 and CEI 20-37/7)
- **IP68 protection level** (compliant with CEI EN 60529) tested to a depth of 10 metres with independent Intertek certification
- Operating temperature: from -20 to 90 °C



SHARK® 6801 STRAIGHT

IP68 gel insulated joint for straight connection cables up to 5 cores



code SH6801

Applications



- Permanent installation under water
- Underground installation
- Overhead installation
- Installation in cable ducts
- Temporary Installations

Advantages

- 100% waterproof
- 100% impenetrable
- Ready for use
- Re-enterable
- No pouring of resin
- Immediate operation
- Excellent electrical insulation
- Good mechanical strength
- No expiry date
- Non-hazardous product

Kit contents

- Joint
- Joint locking and insulating collars
- Installation instructions

APPLICATION TABLE		
Number of cores	Conductor cross section (mm ²)	
	min	max
	25 *	50 *
	1,5 *	6 *

* With suitable connectors

Cross sections measured using FG7 flexible cables





SIZE
1

- Complies with the standard for 0.6/1 kV low voltage joints (CEI EN 50393)
- Self-extinguishing (compliant with EN 60695-2-11)
- Low smoke and toxic gas emission (compliant with CEI-20-37/2-1 and CEI 20-37/7)
- **IP68 protection level** (compliant with CEI EN 60529) tested to a depth of 10 metres with independent Intertek certification
- Operating temperature: from -20 to 90 °C



SHARK® 6801-A — STRAIGHT

IP68 gel insulated joint
for **single core cable** straight connection
shear head bolt connector included



code SH6801A

Applications

- Permanent installation under water
- Underground installation
- Overhead installation
- Installation in cable ducts
- Temporary Installations

Advantages

- 100% waterproof
- 100% impenetrable
- Ready for use
- Re-enterable
- No pouring of resin
- Immediate operation
- Excellent electrical insulation
- Good mechanical strength
- No expiry date
- Non-hazardous product

Kit contents

- Joint
- Joint locking and insulating collars
- Tinned copper connector with steel shear head bolts
- Installation instructions

APPLICATION TABLE

Number of cores	Conductor cross section (mm ²)	
	min	max
●	25	50

Cross sections measured using FG7 flexible cables



- Complies with the standard for 0.6/1 kV low voltage joints (CEI EN 50393)
- Self-extinguishing (compliant with EN 60695-2-11)
- Low smoke and toxic gas emission (compliant with CEI-20-37/2-1 and CEI 20-37/7)
- **IP68 protection level** (compliant with CEI EN 60529) tested to a depth of 10 metres with independent Intertek certification
- Double insulation
- Operating temperature: from -20 to 90 °C



SHARK® 6801-B STRAIGHT

IP68 gel insulated joint
for **3 core cables** straight connection
3 pole insulated terminal strip included



code **SH6801B**

Applications


- Permanent installation under water
- Underground installation
- Overhead installation
- Installation in cable ducts
- Temporary Installations

Advantages

- 100% waterproof
- 100% impenetrable
- Ready for use
- Re-enterable
- No pouring of resin
- Immediate operation
- Excellent electrical insulation
- Good mechanical strength
- No expiry date
- Non-hazardous product

Kit contents

- Joint
- Joint locking and insulating collars
- 3 pole insulated terminal strip (compliant with standards DIN EN 60998 and CSA/UL, VDE marking - Current 20 A)
- Installation instructions

APPLICATION TABLE		
Number of cores	Conductor cross section (mm ²)	
	min	max
	2.5	6

Cross sections measured using FG7 flexible cables



OFFICIALLY
TESTED
INTERTEK






- Complies with the standard for 0.6/1 kV low voltage joints (CEI EN 50393)
- Self-extinguishing (compliant with EN 60695-2-11)
- Low smoke and toxic gas emission (compliant with CEI-20-37/2-1 and CEI 20-37/7)
- **IP68 protection level** (compliant with CEI EN 60529) tested to a depth of 10 metres with independent Intertek certification
- Double insulation
- Operating temperature: from -20 to 90 °C



SHARK® 6801-C STRAIGHT

IP68 gel insulated joint
for **3 core cables** straight connection
3 pole insulated terminal block included

IP68



CE

code SH6801C

Applications

- Permanent installation under water
- Underground installation
- Overhead installation
- Installation in cable ducts
- Temporary Installations


Advantages

- 100% waterproof
- 100% impenetrable
- Ready for use
- Re-enterable
- No pouring of resin
- Immediate operation
- Excellent electrical insulation
- Good mechanical strength
- No expiry date

Kit contents

- Joint
- Joint locking and insulating collars
- Pre-assembled 3 pole insulated terminal block
- Allen key for tightening terminal block screws
- Installation instructions

APPLICATION TABLE

Number of cores	Conductor cross section (mm ²)	
	min	max
	2,5	6

Cross sections measured using FG7 flexible cables

IP68

OFFICIALLY
TESTED
INTERTEK

Intertek

- Complies with the standard for 0.6/1 kV low voltage joints (CEI EN 50393)
- Self-extinguishing (compliant with EN 60695-2-11)
- Low smoke and toxic gas emission (compliant with CEI-20-37/2-1 and CEI 20-37/7)
- **IP68 protection level** (compliant with CEI EN 60529) tested to a depth of 10 metres with independent Intertek certification
- Double insulation
- Operating temperature: from -20 to 90 °C



SHARK® 6801-D STRAIGHT

IP68 gel insulated joint
for **5 core cables** straight connection
5 insulated crimp connectors included



code SH6801D

Applications

- Permanent installation under water
- Underground installation
- Overhead installation
- Installation in cable ducts
- Temporary Installations


Advantages

- 100% waterproof
- 100% impenetrable
- Ready for use
- Re-enterable
- No pouring of resin
- Immediate operation
- Excellent electrical insulation
- Good mechanical strength
- No expiry date

Kit contents

- Joint
- Joint locking and insulating collars
- 5 insulated crimp connectors
- Installation instructions

APPLICATION TABLE

max Number of cores	Conductor cross section (mm ²)	
	min	max
	2.5	6

Cross sections measured using FG7 flexible cables



OFFICIALLY TESTED INTERTEK





- Complies with the standard for 0.6/1 kV low voltage joints (CEI EN 50393)
- Self-extinguishing (compliant with EN 60695-2-11)
- Low smoke and toxic gas emission (compliant with CEI-20-37/2-1 and CEI 20-37/7)
- **IP68 protection level** (compliant with CEI EN 60529) tested to a depth of 10 metres with independent Intertek certification
- Operating temperature: from -20 to 90 °C



SHARK® 6802 STRAIGHT

IP68 gel insulated joint for straight connection cables up to 5 cores



code SH6802

Applications

- Permanent installation under water
- Underground installation
- Overhead installation
- Installation in cable ducts
- Temporary Installations



Advantages

- 100% waterproof
- 100% impenetrable
- Ready for use
- Re-enterable
- No pouring of resin
- Immediate operation
- Excellent electrical insulation
- Good mechanical strength
- No expiry date

Kit contents

- Joint
- Joint locking and insulating collars
- Installation instructions

APPLICATION TABLE

Number of cores	Conductor cross section (mm ²)	
	min	max
	50 *	95 *
	2,5 *	10 *

* With suitable connectors

Cross sections measured using FG7 flexible cables



- Complies with the standard for 0.6/1 kV low voltage joints (CEI EN 50393)
- Self-extinguishing (compliant with EN 60695-2-11)
- Low smoke and toxic gas emission (compliant with CEI-20-37/2-1 and CEI 20-37/7)
- **IP68 protection level** (compliant with CEI EN 60529) tested to a depth of 10 metres with independent Intertek certification
- Double insulation
- Operating temperature: from -20 to 90 °C



SHARK® 6802-A STRAIGHT

IP68 gel insulated joint
for **5 core cables** straight connection
5 pole insulated terminal block included



code SH6802A

Applications


- Permanent installation under water
- Underground installation
- Overhead installation
- Installation in cable ducts
- Temporary Installations

Advantages

- 100% waterproof
- 100% impenetrable
- Ready for use
- Re-enterable
- No pouring of resin
- Immediate operation
- Excellent electrical insulation
- Good mechanical strength
- No expiry date

Kit contents

- Joint
- Joint locking and insulating collars
- Pre-assembled 5 pole insulated terminal block
- Allen key for tightening terminal block screws
- Installation instructions

APPLICATION TABLE		
Max number of cores	Conductor cross section (mm ²)	
	min	max
	2.5	10

Cross sections measured using FG7 flexible cables





- Complies with the standard for 0.6/1 kV low voltage joints (CEI EN 50393)
- Self-extinguishing (compliant with EN 60695-2-11)
- Low smoke and toxic gas emission (compliant with CEI-20-37/2-1 and CEI 20-37/7)
- **IP68 protection level** (compliant with CEI EN 60529) tested to a depth of 10 metres with independent Intertek certification
- Operating temperature: from -20 to +90 °C



SHARK® 6803 STRAIGHT

IP68 gel insulated joint for straight connection cables up to 5 cores



code SH6803

Applications

- Permanent installation under water
- Underground installation
- Overhead installation
- Installation in cable ducts
- Temporary Installations



Advantages

- 100% waterproof
- 100% impenetrable
- Ready for use
- Re-enterable
- No pouring of resin
- Immediate operation
- Excellent electrical insulation
- Good mechanical strength
- No expiry date

Kit contents

- Joint
- Joint locking and insulating collars
- Installation instructions

APPLICATION TABLE

Number of cores	Conductor cross section (mm ²)	
	min	max
	120 *	240 *
	16 *	25 *

* With suitable connectors

Cross sections measured using FG7 flexible cables



- Complies with the standard for 0.6/1 kV low voltage joints (CEI EN 50393)
- Self-extinguishing (compliant with EN 60695-2-11)
- Low smoke and toxic gas emission (compliant with CEI-20-37/2-1 and CEI 20-37/7)
- **IP68 protection level** (compliant with CEI EN 60529) tested to a depth of 10 metres with independent Intertek certification
- Double insulation
- Operating temperature: from -20 to +90 °C



SHARK® 6803-A STRAIGHT

IP68 gel insulated joint
for **5 core cables** straight connection
5 pole insulated terminal block included



code SH6803A

Applications


- Permanent installation under water
- Underground installation
- Overhead installation
- Installation in cable ducts
- Temporary Installations

Advantages

- 100% waterproof
- 100% impenetrable
- Ready for use
- Re-enterable
- No pouring of resin
- Immediate operation
- Excellent electrical insulation
- Good mechanical strength
- No expiry date

Kit contents

- Joint
- Joint locking and insulating collars
- Pre-assembled 5 pole insulated terminal block
- Allen key for tightening terminal block screws
- Installation instructions

APPLICATION TABLE		
max number of cores	Conductor cross section (mm ²)	
	min	max
	16	25

Cross sections measured using FG7 flexible cables



OFFICIALLY
TESTED
INTERTEK

