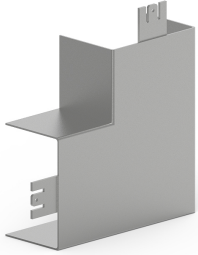


Date: 15.03.2023

Flat angle LFS 40x60, steel, zinc

**Product description**

Flat angle as moulded hood for installation trunking, for cable routing with a 90° change of direction.

Basic data

Item number	2330
Product group	10-Cable routing
Packing unit	1 piece
EAN code	4018475023307
Tariff number	73089059

Technical features

Height	40 mm
Width	60 mm
Model	moulded hood
Angle	90 - 90 °
Material	steel
Halogen free	yes
Surface protection	pre-galvanised
Colour	other
Type of fastening	snap on