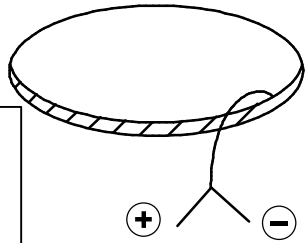
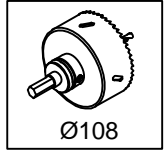
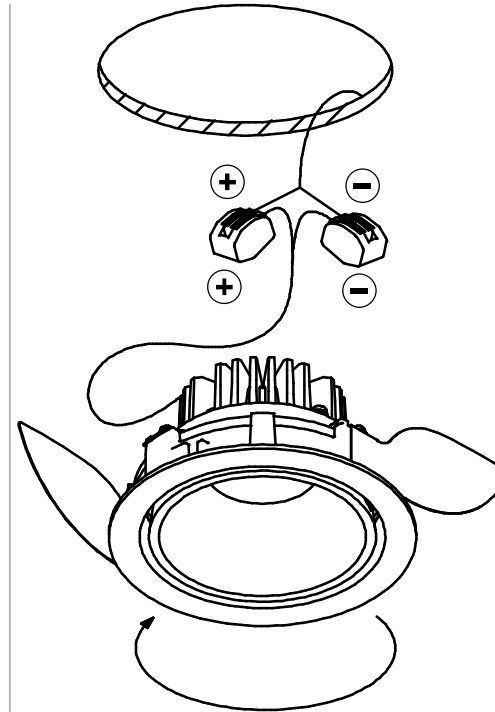
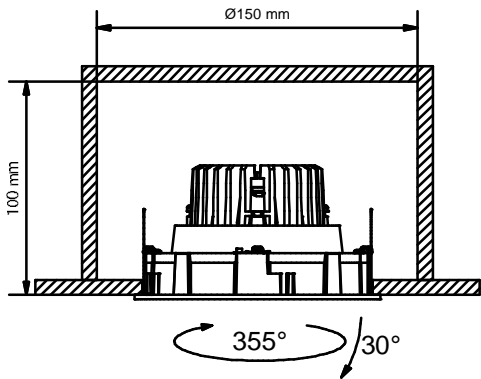
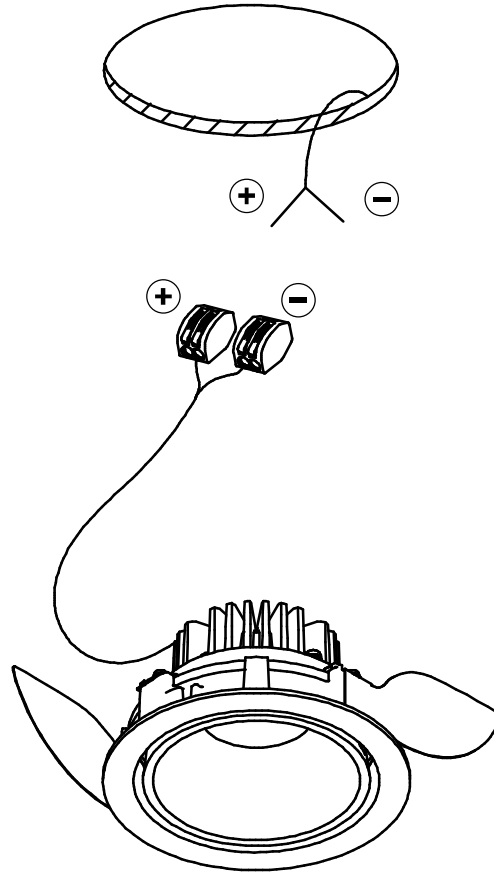


Smart Lotis Adjustable Ø115 LED GE

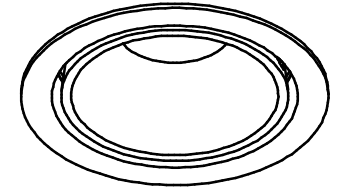
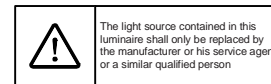
127810XX_127813XX



350mA - min 16,5Vf - max 19,2Vf - 6,2W
 500mA - min 17,1Vf - max 19,8Vf - 9,2W



install : Twist clockwise
 uninstall : Twist counterclockwise



CHECK DIP-SWITCHES ON DRIVER

ON
OFF 1 2 3 4 5 6

check dipswitch settings on driver
 Push Dim max 5 drivers on 1 push button

Drivers:
 see driver matrix - latest version on website
www.supermodular.com or check sales contact

