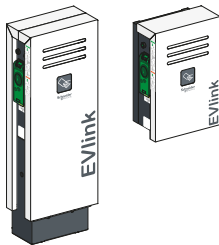


EVlink Smart Wallbox



EVlink Parking



EVlink City



en Configure an Admin badge using the configuration tool and choose the "Reject unknown badges" option. Refer to document DOCA0060EN.

fr Paramétrer un badge en Admin avec l'outil de configuration et choisir l'option "rejeter les badges inconnus". Se référer au document DOCA0060FR.

es Configure un identificador de administrador mediante la herramienta de configuración y elija la opción "Reject unknown badges". Consulte el documento DOCA0060EN.

it Configurare un badge Admin mediante lo strumento di configurazione e scegliere l'opzione "Reject unknown badges". Consultare il documento DOCA0060EN.

de Verwenden Sie zur Konfiguration einer Administratorkarte das Konfigurationstool und wählen Sie die Option „Reject unknown badges“ aus. Siehe das Dokument DOCA0060EN.

nl Gebruik het configuratiehulpmiddel voor het configureren van een Admin-badge en kies de optie "Reject unknown badges". Raadpleeg het document DOCA0060EN.

no Konfigurer et Admin-merke med konfigureringsverktøyet og vel alternativet "Reject unknown badges". Se dokument DOCA0060EN.

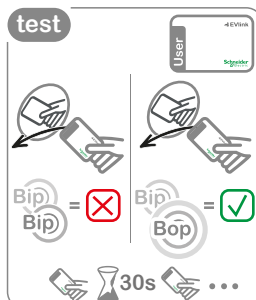
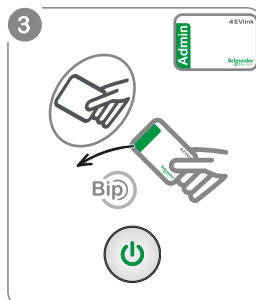
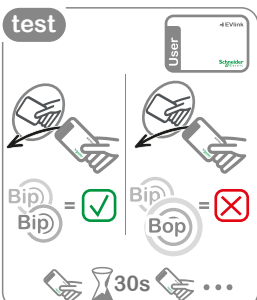
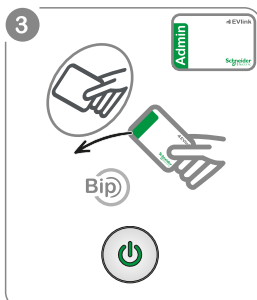
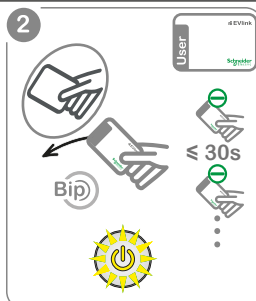
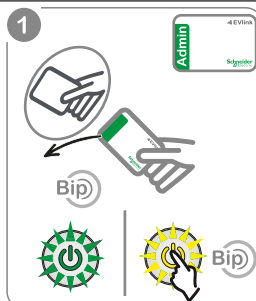
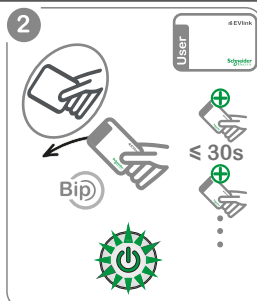
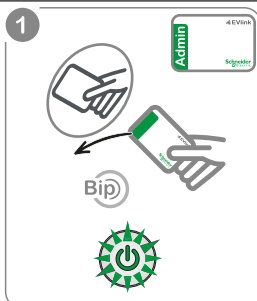
sv Konfigurera en administratörsbricka med konfigurationsvertyget och välj alternativet "Reject unknown badges". Se dokumentet DOCA0060EN.



EVlink Smart Wallbox



EVlink Smart Wallbox





EVlink Parking

1

Admin EVlink
Schneider

Bip x4

2

User EVlink
Schneider

Bip x2

3

Admin EVlink
Schneider

Bip x4

test

Admin EVlink
Schneider

Bip = ✓

User EVlink
Schneider

Bop = ✗



EVlink Parking

1

Admin EVlink
Schneider

Bip x4

2

User EVlink
Schneider

Bip x2

< 5 Sec

Bip

3

Admin EVlink
Schneider

Bip x4

test

Admin EVlink
Schneider

Bip = ✗

User EVlink
Schneider

Bop = ✓



EVlink City

1

Admin EVlink
Schneider

Bip x4

2

User EVlink
Schneider

Bip

3

Admin EVlink
Schneider

Bip x4

test

Admin EVlink
Schneider

Bip = ✓

User EVlink
Schneider

Bop = ✗



EVlink City

1

Admin EVlink
Schneider

Bip x4

2

User EVlink
Schneider

Bip

< 5 Sec

3

Admin EVlink
Schneider

Bip x4

test

Admin EVlink
Schneider

Bip = ✗

User EVlink
Schneider

Bop = ✓