

# Tools and accessories

**Renewable Energy | Solar Photovoltaics**

EN



# Content



Page 4

## Assembly tools

- Crimping pliers for MC4 and MC4-Evo 2
- Crimping pliers for closed crimp contacts MC4
- Crimping pliers for closed crimp contacts MC4
- Crimping pliers for semi-professional use MC4
- Stripping pliers
- Open-end spanner and unlocking tool
- Cable cutter
- Torque tool set



Page 15

## Tool Case

- Tool case MC4 and MC4-Evo 2



Page 16

## Accessories

- Adapter test lead MC4
- Test socket and plug MC4
- Test plug MC4
- Test plug MC4-Evo 2
- Sealing caps MC4 and MC4-Evo 2
- Safety lock clip
- Socket wrench insert



ASSEMBLY TOOLS

# Crimping pliers for MC4 and MC4-Evo 2



Crimping pliers for MC4 and MC4-Evo 2 (PV-CZM...)



Locator (PV-LOC-MC4-EVO 2...)



Locator (PV-LOC-MC4...)

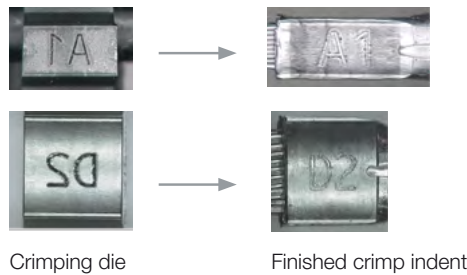


Crimping die (PV-ES-CZM...)

- One crimping pliers for crimping on both MC4 and MC4-Evo 2.
- Designed to be used for all open B-crimps (not applicable for closed crimp contacts).
- The crimping tool can process the following conductor cross-sections with one crimping die:
  - Size 1: 2.5 mm<sup>2</sup>, 4 mm<sup>2</sup> and 6 mm<sup>2</sup>
  - Size 2: 4 mm<sup>2</sup>, 6 mm<sup>2</sup> and 10 mm<sup>2</sup>
- TÜV and UL certified product.
- Registered design feature providing traceability information about crimping tool on each individual crimp.

## How to verify that each crimp is made using the suitable tool and die?

The registered design of the crimp traceability concept is providing information about the conductor size, crimp height and crimp width. For further information about this feature please refer to assembly instruction MA704.



## Usage matrix

| Connector type                                     | Conductor cross section | Open crimp contacts<br><b>B-Crimp</b> | Closed crimp contacts*<br><b>O-Crimp</b> | Crimping pliers                      |                                      | Crimping dies                           |   | Locators   |   |  |   |
|--|-------------------------|---------------------------------------|--|--------------------------------------|--------------------------------------|---|---|--|---|--|---|
|  |                         |                                       |  | PV-CZM-60100<br><b>32.6020-60100</b> | PV-CZM-61100<br><b>32.6020-61100</b> | PV-ES-CZM-60100<br><b>32.6021-60100</b> | PV-ES-CZM-61100<br><b>32.6021-61100</b> | PV-LOC-MC4<br><b>32.6081</b><br>4 mm <sup>2</sup> ; 6 mm <sup>2</sup> ; 10 mm <sup>2</sup> | PV-LOC-MC4<br><b>32.6082</b><br>2.5 mm <sup>2</sup> ; 4 mm <sup>2</sup> ; 6 mm <sup>2</sup> | PV-LOC-MC4-EVO 2<br><b>32.6083</b><br>4 mm <sup>2</sup> ; 6 mm <sup>2</sup> ; 10 mm <sup>2</sup> | PV-LOC-MC4-EVO 2<br><b>32.6084</b><br>2.5 mm <sup>2</sup> ; 4 mm <sup>2</sup> ; 6 mm <sup>2</sup> |
| PV-KBT4/2,5...-UR<br>PV-KST4/2,5...-UR             | 2.5 mm <sup>2</sup>     | ✓                                     | ✗  |                                      | ✓                                    |   | ✓                                       |  | ✓   |  |   |
|  | 14 AWG                  | ✓                                     | ✗  |                                      | ✓                                    |   | ✓                                       |  | ✓   |  |   |
| PV-KBT4/6...-UR<br>PV-KST4/6...-UR                 | 4 mm <sup>2</sup>       | ✓                                     | ✗  | ✓                                    | ✓                                    | ✓                                       | ✓                                       | ✓  | ✓   |  |   |
|  | 12 AWG                  | ✓                                     | ✗  | ✓                                    | ✓                                    | ✓                                       | ✓                                       | ✓  | ✓   |  |   |
|  | 6 mm <sup>2</sup>       | ✓                                     | ✗  | ✓                                    | ✓                                    | ✓                                       | ✓                                       | ✓  | ✓   |  |   |
|  | 10 AWG                  | ✓                                     | ✗  | ✓                                    | ✓                                    | ✓                                       | ✓                                       | ✓  | ✓   |  |   |
| PV-KBT4/10...<br>PV-KST4/10...                     | 10 mm <sup>2</sup>      | ✓                                     | ✗  | ✓                                    |                                      | ✓                                       |   | ✓  |   |  |   |
| PV-KST4-EVO 2/2.5...-UR<br>PV-KBT4-EVO 2/2.5...-UR | 2.5 mm <sup>2</sup>     | ✓                                     | ✗  |                                      | ✓                                    |   | ✓                                       |  |   |  | ✓   |
|  | 14 AWG                  | ✓                                     | ✗  |                                      | ✓                                    |   | ✓                                       |  |   |  | ✓   |
| PV-KST4-EVO 2/6...-UR<br>PV-KBT4-EVO 2/6...-UR     | 4 mm <sup>2</sup>       | ✓                                     | ✗  | ✓                                    | ✓                                    | ✓                                       | ✓                                       |  |   | ✓  | ✓   |
|  | 12 AWG                  | ✓                                     | ✗  | ✓                                    | ✓                                    | ✓                                       | ✓                                       |  |   | ✓  | ✓   |
|  | 6 mm <sup>2</sup>       | ✓                                     | ✗  | ✓                                    | ✓                                    | ✓                                       | ✓                                       |  |   | ✓  | ✓   |
|  | 10 AWG                  | ✓                                     | ✗  | ✓                                    | ✓                                    | ✓                                       | ✓                                       |  |   | ✓  | ✓   |
| PV-KST4-EVO 2A/6...<br>PV-KBT4-EVO 2A/6...         | 4 mm <sup>2</sup>       | ✓                                     | ✗  | ✓                                    | ✓                                    | ✓                                       | ✓                                       |  |   | ✓  | ✓   |
|  | 12 AWG                  | ✓                                     | ✗  | ✓                                    | ✓                                    | ✓                                       | ✓                                       |  |   | ✓  | ✓   |
|  | 6 mm <sup>2</sup>       | ✓                                     | ✗  | ✓                                    | ✓                                    | ✓                                       | ✓                                       |  |   | ✓  | ✓   |
|  | 10 AWG                  | ✓                                     | ✗  | ✓                                    | ✓                                    | ✓                                       | ✓                                       |  |   | ✓  | ✓   |
| PV-KST4-EVO 2A/10...<br>PV-KBT4-EVO 2A/10...       | 10 mm <sup>2</sup>      | ✓                                     | ✗  | ✓                                    |                                      | ✓                                       |   |  |   | ✓  |   |
|  | 8 AWG                   | ✓                                     | ✗  | ✓                                    |                                      | ✓                                       |   |  |   | ✓  |   |

\* The crimping pliers for MC4 and MC4-Evo 2 along with the available crimping dies listed in the above table do not provide any feasible crimping for closed crimps. Closed crimps will become unuseable.

## Ordering information

| Order-No.            | Type                     | Description  | Crimping range  |
|----------------------|--------------------------|--|-----------------|
|                      |                          |  | mm <sup>2</sup> |
| <b>32.6020-61100</b> | PV-CZM-61100             | <b>Size 1:</b> Crimping pliers incl. locator for MC4 and MC4-Evo 2 | 2.5; 4; 6       |
| Consisting of:       |                          |  |                 |
| 32.6082              | PV-LOC-MC4 2.5/4/6       | Locator for MC4  | 2.5; 4; 6       |
| 32.6084              | PV-LOC-MC4-EVO 2 2.5/4/6 | Locator for MC4-Evo 2  |                 |
| 32.6021-61100        | PV-ES-CZM-61100          | Crimping die   |                 |
| <b>32.6020-60100</b> | PV-CZM-60100             | <b>Size 2:</b> Crimping pliers incl. locator for MC4 and MC4-Evo 2 | 4; 6; 10        |
| Consisting of:       |                          |  |                 |
| 32.6081              | PV-LOC-MC4 4/6/10        | Locator for MC4  | 4; 6; 10        |
| 32.6083              | PV-LOC-MC4-EVO 2 4/6/10  | Locator for MC4-Evo 2  |                 |
| 32.6021-60100        | PV-ES-CZM-60100          | Crimping die   |                 |

## Further information



### Assembly instructions

For assembly instructions for “Crimping pliers for MC4 and MC4-Evo 2” please consult:  
[www.staubli.com/re-downloads.html](http://www.staubli.com/re-downloads.html) → English → Assembly info → **MA704**



# Crimping pliers for closed crimp contacts MC4



Crimping pliers for closed crimp contacts MC4 (PV-CZM...)

- These tools are to be used for the assembly of UL- and TÜV-approved products.
- These are suited for the processing of high numbers of pieces and can be adjusted to the product to be processed with the help of changeable locators and crimp inserts.

## Ordering information

| Order No.             | Type          | Designation                                    | Connector system | Crimp range     |               | Crimptype      |                  |
|-----------------------|---------------|--|------------------|-----------------|---------------|----------------|------------------|
|                       |               |  |                  | mm <sup>2</sup> | AWG           | Open crimp AWG | Closed crimp AWG |
| <b>32.6020-16100A</b> | PV-CZM-16100A | Crimping pliers incl. locator and crimping die | MC4              | 2.5; 4; 6       | 14; 12; 10    |                | 14; 12; 10       |
| <b>32.6020-22100</b>  | PV-CZM-22100  |  | MC4              |                 | 12; 10; 8     | 12; 10         | 8                |
| <b>32.6020-23100</b>  | PV-CZM-23100  |  | MC4              |                 | 14; 12; 10; 8 |                | 14; 12; 10; 8    |

### Individual parts

|               |                 |              |     |     |               |        |               |
|---------------|-----------------|--------------|-----|-----|---------------|--------|---------------|
| 32.6021-18100 | PV-ES-CZM-18100 | Crimping die | MC4 | 2.5 | 14; 12        |        | 14; 12        |
| 32.6021-22100 | PV-ES-CZM-22100 | Crimping die | MC4 |     | 12; 10; 8     | 12; 10 | 8             |
| 32.6021-23100 | PV-ES-CZM-23100 | Crimping die | MC4 |     | 14; 12; 10; 8 |        | 14; 12; 10; 8 |
| 32.6055       | PV-LOC-B        | Locator      | MC4 |     | 12; 10; 8     | 12; 10 | 8             |
| 32.6074       | PV-LOC-D        | Locator      | MC4 |     | 14; 12; 10; 8 |        | 14; 12; 10; 8 |

### Note

Please contact us for information on pneumatic crimp station options.

### Note

For applications on the MC4 test socket and plug (order no. 32.0044 and 32.0045), please use the type PV-CZM-16100.

## Further information



### Assembly instructions

For assembly instructions for “Crimping pliers for closed crimp contacts MC4 (PV-CZM...)” please consult: [www.staubli.com/re-downloads.html](http://www.staubli.com/re-downloads.html) → English → Assembly info → **MA251**



# Crimping pliers for closed crimp contacts MC4



Crimping pliers for closed crimp contacts MC4 (PV-CZLX/6AWG...)

- Manual crimping pliers for MC4 cable couplers with 6 AWG closed crimp terminals (PV-KBT4/13II-UR and PV-KST/13II-UR).
- Locator included for correct positioning of crimp.

## Ordering information

| Order No. | Type         | Designation                    | Connector system | Crimp range     |     | Crimptype      |                  |
|-----------|--------------|--------------------------------|------------------|-----------------|-----|----------------|------------------|
|           |              |                                |                  | mm <sup>2</sup> | AWG | Open crimp AWG | Closed crimp AWG |
| 32.0349   | PV-CZLX/6AWG | Crimping pliers, incl. locator | MC4              |                 | 6   |                | 6                |

### Individual parts

|         |                 |         |     |  |   |  |   |
|---------|-----------------|---------|-----|--|---|--|---|
| 32.0350 | PV-CZL/6AWG-LOC | Locator | MC4 |  | 6 |  | 6 |
|---------|-----------------|---------|-----|--|---|--|---|

### Note

Please contact us for information on pneumatic crimp station options.

## Further information



### Assembly instructions

For assembly instructions for “Crimping pliers for closed crimp contacts MC4 (PV-CZLX/6AWG)” please consult: [www.staubli.com/re-downloads.html](http://www.staubli.com/re-downloads.html) → English → Assembly info → **MA710**

# Crimping pliers for semi-professional use MC4



- Suitable for the assembly of products approved by TÜV in small amounts.
- Complete tool for the assembly of the original MC4.

Crimping pliers for semi-professional use MC4 (PV-CZM-BS)

## Ordering information

| Order No. | Type      | Designation               | Pliers cross sections |     | Connector system |
|-----------|-----------|---------------------------|-----------------------|-----|------------------|
|           |           |                           | mm <sup>2</sup>       | AWG |                  |
| 32.6025   | PV-CZM-BS | Crimping pliers, complete | 2.5; 4; 6             |     | MC4              |

## Further information



### Assembly instructions

For assembly instructions for “Crimping pliers for semi-professional use MC4” please consult:  
[www.staubli.com/re-downloads.html](http://www.staubli.com/re-downloads.html) → English → Assembly info → **MA289**

# Stripping pliers



- Specially adapted for the Flex-Sol-Evo PV cable.
- For stripping small cable quantities.
- With length stop.

Stripping pliers (PV-AZM...)

## Ordering information

| Order No.          | Type         | Designation                                      | Pliers cross sections |
|--------------------|--------------|--|-----------------------|
|                    |              |  | mm <sup>2</sup>       |
| <b>32.6027-156</b> | PV-AZM-156   | Stripping pliers incl. built-in stripping blades | 1.5; 2.5; 4; 6        |
| <b>32.6027-410</b> | PV-AZM-410   | Stripping pliers incl. built-in stripping blades | 4; 6; 10              |
| <b>32.6057-156</b> | PV-M-AZM-156 | Stripping blades set                             | 1.5; 2.5; 4; 6        |
| <b>32.6057-410</b> | PV-M-AZM-410 | Stripping blades set                             | 4; 6; 10              |

## Further information



### Assembly instructions

For assembly instructions for “Stripping pliers” please consult:

[www.staubli.com/re-downloads.html](http://www.staubli.com/re-downloads.html) → English → Assembly info → **MA267**

# Open-end spanner and unlocking tool



Open-end spanner set for MC4 (PV-MS)



Unlocking tool for MC4-Evo 2  
(PV-MS-MC4-EVO 2)

- To tighten and unscrew the cable gland and to open the locking device of the connection.



Open-end spanner set for MC4 and  
MC4-Evo 2 (PV-MS-PLS)



Unlocking tool for MC4-Evo AC  
(PV-MS-EVO AC)

## Ordering information

| Order No. | Type            | Designation  |
|-----------|-----------------|--|
| 32.6024   | PV-MS           | Open-end spanner set for MC4 (2 pcs.), plastic             |
| 32.6058   | PV-MS-PLS       | Open-end spanner set for MC4 and MC4-Evo 2 (2 pcs.), metal |
| 32.6066   | PV-MS-MC4-Evo 2 | Unlocking tool for MC4-Evo 2, plastic                      |
| 32.6075   | PV-MS-EVO AC    | Unlocking tool for MC4-Evo AC, plastic                     |

## Further information



### Assembly instructions

For assembly instructions for “Open-end spanner set for MC4 and MC4-Evo 2” please consult:  
[www.staubli.com/re-downloads.html](http://www.staubli.com/re-downloads.html) → English → Assembly info → **MA270**

# Cable cutter



Cable cutter (PV-WZ-KS)

- Cable cutter with a special cutting blade geometry for easy, clean cuts with an opening spring.
- Ergonomic one-hand operation.
- No crushing or deformation of wire.
- For cutting solid, stranded and flexible copper- and aluminum cables and wires.
- Not to be used on steel wire, wire rope, and hard-drawn copper cable.

## Ordering information

| Order No. | Type     | Designation  | Max. wire diameter |
|-----------|----------|--------------|--------------------|
| 32.6080   | PV-WZ-KS | Cable cutter | 15 mm              |

## Further information



### Assembly instructions

For assembly instructions for “Cable cutter” please consult:

[www.staubli.com/re-downloads.html](http://www.staubli.com/re-downloads.html) → English → Assembly info → **MA705**

# Torque tool set



Torque tool set (PV-WZ-TORQUE-SET)

- Adjustable torque tool set with special design: easy-in, easy-out, universal hold and one-hand use.
- For manual assembly of Original MC4 and MC4-Evo 2 cable couplers.
- Comes with a multi-component special pistol grip which provides a safe and comfortable fit in the hand and high-power transfer.

## Technical data

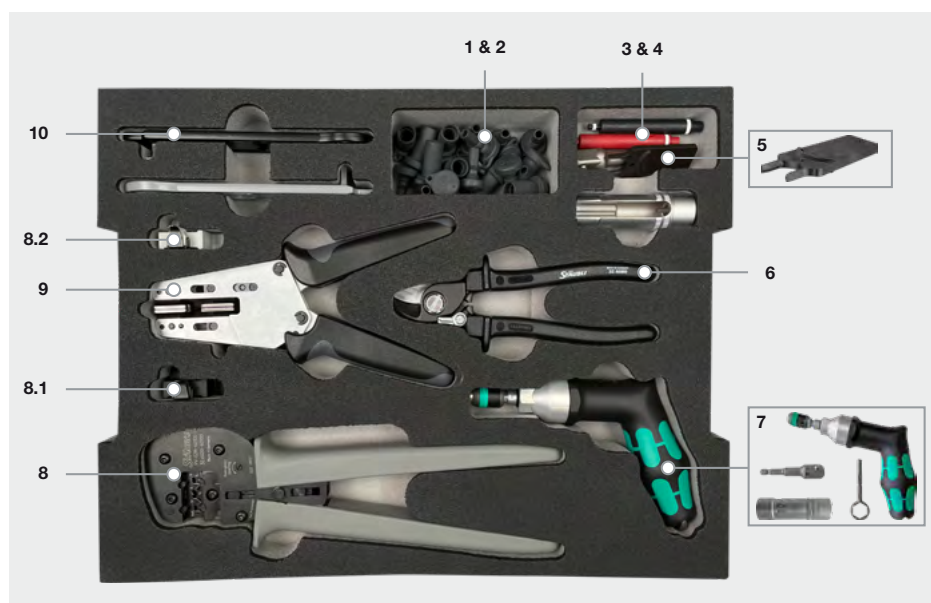
| Technical data |                                   |
|----------------|-----------------------------------|
| Range          | 3.0 N m – 6.0 N m                 |
| Accuracy       | Accuracy: $\pm 6\%$ (EN ISO 6789) |
| Scale          | Numerical torque value scale      |

## Ordering information

| Order No. | Type             | Description  |
|-----------|------------------|--|
| 32.0065   | PV-WZ-TORQUE-SET | Torque tool set: consisting of torque tool (incl. extra tool integrated in handle to set torque), adapter and socket wrench insert |

TOOL CASE

# Tool case MC4 and MC4-Evo 2



- Robust plastic case with tools for assembly of PV-KxT4 and PV-KxT4-Evo 2.
- Configured for open crimp contacts (4 mm<sup>2</sup>, 6 mm<sup>2</sup>, 10 mm<sup>2</sup>).

Tool case MC4 and MC4-Evo 2

## Ordering information

| Pos. | Order No.      | Type                       | Description                 | Dimensions               |
|------|----------------|----------------------------|-----------------------------|--------------------------|
|      | <b>32.6126</b> | PV-Installer Tool Case SET | Tool case MC4 and MC4-Evo 2 | 444 mm x 118 mm x 350 mm |

Consisting of:

|     |                      |                  |                                    |  |
|-----|----------------------|------------------|------------------------------------|--|
| 1   | <b>32.0716</b>       | PV-BVK4          | Sealing caps socket, 10 x          |  |
| 2   | <b>32.0717</b>       | PV-SVK4          | Sealing caps plug, 10 x            |  |
| 3   | <b>32.6028</b>       | PV-PST           | Test plug MC4                      |  |
| 4   | <b>32.6073</b>       | PV-EVO-PST       | Test plug MC4-Evo 2                |  |
| 5   | <b>32.6066</b>       | PV-MS-MC4-EVO    | Unlocking tool                     |  |
| 6   | <b>32.6080</b>       | PV-WZ-KS         | Cable cutter                       |  |
| 7   | <b>32.0065</b>       | PV-WZ-TORQUE-SET | Torque tool                        |  |
| 8   | <b>32.6020-60100</b> | PV-CZM-60100     | Crimping pliers for MC4, MC4-Evo 2 |  |
| 8.1 | <b>32.6081</b>       | PV-LOC-MC4       | Locator for MC4                    |  |
| 8.2 | <b>32.6083</b>       | PV-LOC-MC4-Evo 2 | Locator for MC4-Evo 2              |  |
| 9   | <b>32.6027-410</b>   | PV-AZM-410       | Stripping pliers                   |  |
| 10  | <b>32.6058</b>       | PV-MS-PLS        | Assembly and unlocking tool        |  |

ACCESSORIES

# Adapter test lead MC4



Adapter test lead with female MC4 (PV-AMLB4/150)



Adapter test lead with male MC4 (PV-AMLS4/150)

- The adapter test lead MC4 is suitable for safe current and voltage measuring on PV modules and systems.
- Suitable for connecting connectors of the MC4 connector system to measuring instruments with Ø 4 mm safety sockets.

## Technical data

| Technical data      |                   |
|---------------------|-------------------|
| Connector system    | MC4               |
| Rated voltage       | 1000 V            |
| Rated current       | 19 A              |
| Category            | CAT III           |
| Degree of pollution | 2                 |
| Lead cross section  | 1 mm <sup>2</sup> |
| Lead length         | 150 mm            |
| Lead insulation     | PVC               |

## Ordering information

| Order No.     | Type         | Socket | Plug | Connector system | Colour |
|---------------|--------------|--------|------|------------------|--------|
| 32.1198-15021 | PV-AMLB4/150 | x      |      | MC4              | 21     |
| 32.1198-15023 | PV-AMLB4/150 | x      |      | MC4              | 23     |
| 32.1199-15021 | PV-AMLS4/150 |        | x    | MC4              | 21     |
| 32.1199-15022 | PV-AMLS4/150 |        | x    | MC4              | 22     |

**Note**

Unmated connectors must be protected from any contamination using Stäubli sealing caps. For ordering information concerning Stäubli sealing caps, please consult “Sealing caps” on page 19.



# Test socket and plug MC4



Test socket MC4 (PV-KBT4II-P AU)



Test plug MC4 (PV-KST4II-P AU)

- Special construction with gold plated contacts for test and measurement to achieve higher mating cycles.
- Without locking system.

## Technical data

| Technical data                           |  |
|--|--|
| Connector system                         | MC4  |
| Rated voltage                            | DC 1000 V (IEC)  |
| Rated current                            | 30 A   |
| Degree of protection, unmated            | IP2X   |
| Category                                 | CAT III  |
| Degree of pollution                      | 2  |
| Max. contact resistance of the connector | 0.25 mΩ  |
| Contact material                         | Copper, gold plated                                      |
| Lead cross section                       | 2.5 mm <sup>2</sup> ; 4 mm <sup>2</sup> (12 AWG; 14 AWG) |
| Insulation material                      | PC/PA  |

## Ordering information

| Order No. | Type           | Socket | Plug | Connector system |
|-----------|----------------|--------|------|------------------|
| 32.0044   | PV-KBT4II-P AU | x      |      | MC4              |
| 32.0045   | PV-KST4II-P AU |        | x    | MC4              |

## Further information



### Assembly instructions

For assembly instructions for “Test socket and plug MC4” please consult:  
[www.staubli.com/re-downloads.html](http://www.staubli.com/re-downloads.html) → English → Assembly info → **MA260**

# Test plug MC4



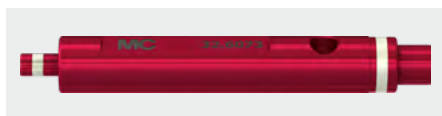
Test plug MC4 (PV-PST)

- This test plug is used to control the correct location of the MC4 contact in the insulation.

## Ordering information

| Order No. | Type   |
|-----------|--------|
| 32.6028   | PV-PST |

# Test plug MC4-Evo 2



Test plug MC4-Evo 2 (PV-EVO-PST)

- This test plug is used to control the correct location of the MC4-Evo 2 contact in the insulation.

## Ordering information

| Order No. | Type       |
|-----------|------------|
| 32.6073   | PV-EVO-PST |

# Sealing caps MC4 and MC4-Evo 2



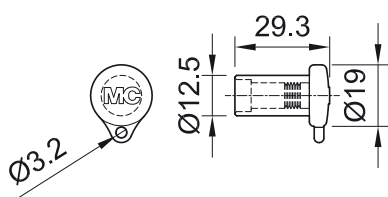
Sealing cap for female cable couplers (PV-BVK4)



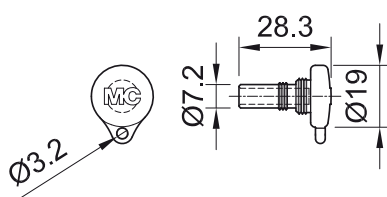
Sealing cap for male cable couplers (PV-SVK4)

- Sealing caps for protective purpose of unplugged PV connectors.

## Dimensional drawings



Sealing cap for female cable couplers (PV-BVK4)



Sealing cap for male cable couplers (PV-SVK4)

## Ordering information

| Order No. | Type    | Suitable for socket side | Suitable for plug side | Material | Connector system |
|-----------|---------|--------------------------|------------------------|----------|------------------|
| 32.0716   | PV-BVK4 | x                        |                        | TPE      | MC4/MC4-Evo 2    |
| 32.0717   | PV-SVK4 |                          | x                      | TPE      | MC4/MC4-Evo 2    |

## Further information



### Assembly instructions

For assembly instructions for “Sealing caps MC4 and MC4-Evo 2” please consult:  
[www.staubli.com/re-downloads.html](http://www.staubli.com/re-downloads.html) → English → Assembly info → **MA258**

# Safety lock clip



Safety lock clip (PV-SSH4)

- The pluggable safety lock clip secures the PV plug connection. The plug connection can only be unlocked with the open-end spanner set (PV-MS or PV-MS-PLS).
- The safety lock clip is suitable for MC4 connector systems.

## Ordering information

| Order No. | Type    | Description      | Connector system |
|-----------|---------|------------------|------------------|
| 32.5280   | PV-SSH4 | Safety lock clip | MC4              |

## Further information



### Assembly instructions

For assembly instructions for “Safety lock clip” please consult:  
[www.staubli.com/re-downloads.html](http://www.staubli.com/re-downloads.html) → English → Assembly info → **MA252**

# Socket wrench insert



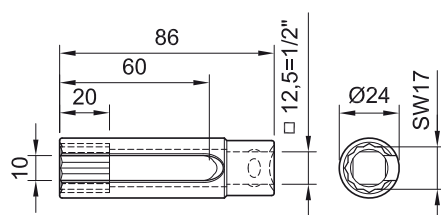
Socket wrench insert to tighten (PV-WZ-AD/GWD)



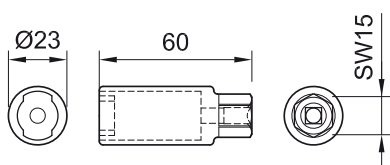
Socket wrench insert to secure (PV-SSE-AD4)

- Stäubli recommends these socket wrench inserts for a simple and safe assembly of the panel receptacles.

## Dimensional drawings



Socket wrench insert to tighten (PV-WZ-AD/GWD)



Socket wrench insert to secure (PV-SSE-AD4)

## Ordering information

| Order No. | Type         | Description                     |
|-----------|--------------|---------------------------------|
| 32.6006   | PV-WZ-AD/GWD | Socket wrench insert to tighten |
| 32.6026   | PV-SSE-AD4   | Socket wrench insert to secure  |







● Stäubli Units   ○ Representatives/Agents

# Global presence of the Stäubli Group

[www.staubli.com](http://www.staubli.com)