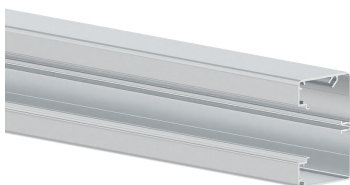


Date: 22.03.2023

Wall trunking-base MBRA 60x90, aluminium, 45 mm cover, anodised



Product description

Base of wall duct made of aluminium to DIN EN 50085-2-1 for cable routing directly on the wall or on wall brackets, 45 mm cover for device installation of compact M45 built-in devices in 45x45 mm format, base with double-row base perforation for fastening, a mounting rail for snap-in mounting of a partition wall for separating cables and earthing grooves for equipotential bonding by means of earthing cable. Connecting pins as mounting aids and for easy connection of two base units are additionally available as accessories. Note: Potential equalisation, earthing, sound and fire protection measures must be carried out professionally.

Basic data

Item number	5445
Product group	20-Wall installation
Packing unit	6 meters
EAN code	4018475243071
Tariff number	76109090

Technical features

Width	90 mm
Depth	60 mm
Length	2000 mm
Number of covers	1
Covers supplied with the product	no
Cover width 1	45 mm
Symmetric	yes
Construction type rectangular	yes
Material	aluminium
Halogen free	yes
Surface protection	anodised
Colour	silver
Construction rear wall (inner side)	continuous DIN-rail
With protective foil	no
Number of plug-in partitions	1
Mounting perforation in bottom	yes
Mounting method cover	inner lying
Useful cross section	4900 mm ²