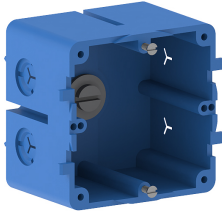


Date: 08.03.2023

## Junction box for wall duct single GDS 50-1 for FB/BR mit DIN-rail



### Product description

Halogen-free flush-mounting box to accommodate one commercially available device unit from the standard switch range, with feed openings for cable diameters of 7-13mm, for installation in wall trunking and installation trunking with a DIN rail and a height of 60 mm.

### Basic data

Item number	1268
Product group	20-Wall installation
Packing unit	48 pieces
EAN code	4018475012684
Tariff number	39269097

### Technical features

Model	open
Number of units	1
Type of device	with bearer ring/bearer bracket
Material	plastic
Mounting method installation unit	screw
Strain relief possibility	yes
With connection space	yes
Mounting method box	Rückwand
Mounting track	other