

PRODUCT DATA SHEET

Part number 430309

EAN 4015609019571

Manufacturer WALTHER-WERKE

WEEE-Reg.-Number: DE 22131895

Product description

Panel socket straight 32A 3P 9h with flange
75x75mm



Product image

Detailed product description

WALTHER Panel socket 32A 3P 400V 9h IP44
 straight
 made from PA6 material
 finger-safe in accordance with BGV A3
 soft transition
 radius from flange to collar
 flange 75x75
 fixing center 60x60

Ordering Information

| | |
|-------------------------|-----------|
| Order unit | Piece |
| Customs number | 85366990 |
| Net weight | 0,2104 kg |
| Packing quantity (VPE) | 10 |
| Length of the packaging | 0,31 m |
| Width of the packaging | 0,195 m |
| Depth of the packaging | 0,14 m |
| Gross weight(VPE) | 2,252 kg |

Certificates

| | | |
|-------------------|-----------------------|---|
| VDE certification | 123021 |  |
| UL certification | No. E83342 |  |
| EAC certification | BY112.02.01.020 06089 |  |

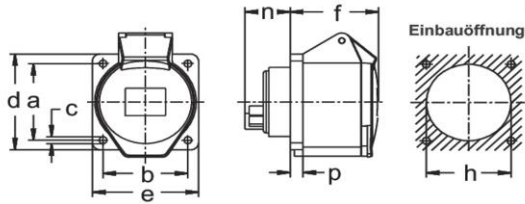
Classification system

| | |
|-----------------------|----------|
| Classification system | ETIM_6.0 |
| ETIM Class | EC001317 |

Technical product data

| | |
|---------------------------------------|----------------------|
| IEC-amperage | 32 A |
| Amperage acc. UL/CSA (for UL-version) | 30 A |
| Number of poles | 3 |
| Voltage acc. EN 60309-2 | 400 V (50+60 Hz) red |
| Clock hour position | 9 h |
| Identification colour | Red |
| RAL-number | 3000 |
| Degree of protection (IP) | IP44 |
| Connection system | Screwed terminal |
| Angle of plug | Straight |
| Material | Plastic |
| Military model | False |
| Flange size vertical | 75 mm |
| Drill hole distance vertical | 60 mm |
| Flange size horizontal | 75 mm |
| Drill hole distance horizontal | 60 mm |

Dimension sheet



| Amp. | 16 | | | 32 | | |
|------|-----|-----|-----|-----|-----|-----|
| Pole | 3 | 4 | 5 | 3 | 4 | 5 |
| a | 60 | 60 | 60 | 60 | 60 | 60 |
| b | 60 | 60 | 60 | 60 | 60 | 60 |
| c | 5,5 | 5,5 | 5,5 | 5,5 | 5,5 | 5,5 |
| d | 75 | 75 | 75 | 75 | 75 | 75 |
| e | 75 | 75 | 75 | 75 | 75 | 75 |
| f | 52 | 53 | 53 | 65 | 65 | 65 |
| h | 46 | 60 | 60 | 60 | 60 | 60 |
| n | 28 | 28 | 28 | 27 | 27 | 27 |
| p | 6 | 9 | 9 | 9 | 9 | 9 |

| Passender Blindflansch, Art.-Nr. 10 015: | |
|--|-----|
| a | 60 |
| b | 60 |
| c | 5,2 |
| d | 75 |
| e | 75 |
| p | 6 |