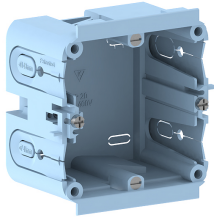


Date: 20.03.2023

Junction box for wall duct single GDX/P-1 front-locking for BR/BRA/BRS



Product description

Halogen-free flush-mounting box for accommodating a commercially available device unit from the standard switch range, with strain-relief feed openings for cable diameters of 7-11mm and 11-13mm, for installation in wall trunking with a 76.5 mm wide fixing track.

Basic data

Item number	3677
Product group	20-Wall installation
Packing unit	40 pieces
EAN code	4018475228412
Tariff number	39269097

Technical features

Model	open
Number of units	1
Type of device	with bearer ring/bearer bracket
Material	plastic
Mounting method installation unit	screw
Strain relief possibility	yes
With connection space	yes
Mounting method box	Front
Mounting track	other